

Demography and the Long-Run Predictability of the Stock Market

John GEANAKOPOLOS

*Cowles Foundation for Research in Economics
Yale University*

Michael MAGILL

*Department of Economics
University of Southern California*

Martine QUINZII

*Department of Economics
University of California, Davis*

February 2004

This paper was begun during a visit at the Cowles Foundation in Fall 2000 and revised during a visit in Fall 2002: Michael Magill and Martine Quinzii are grateful for the stimulating environment and the research support provided by the Cowles Foundation. We are also grateful to Bob Shiller for helpful discussions, and to participants at the Cowles Conference on Incomplete Markets at Yale University, the SITE Workshop at Stanford University, the Incomplete Markets Workshop at SUNY Stony Brook during the summer 2001, the Southwest Economic Conference at UCLA, and the Conference for the Advancement of Economic Theory at Rhodes in 2003 for helpful comments.

Demography and the Long-run Predictability of the Stock Market

1. Introduction

The secular movement of the US stock market in the postwar period has been characterized by three distinct episodes of sustained increase or decrease of real stock prices: the bull market of the fifties and early sixties, the subsequent bear market of the seventies and early eighties, and the bull market of the late eighties and nineties. Explaining such sustained increases or decreases in security prices over twenty-year spans has proved somewhat of a challenge for the economics profession. For the most recent and spectacular bull market, typical explanations¹ have been based on the advent of a “new economy” in which innovations create a permanently higher rate of growth and an accompanying increase in the intangible capital of the corporate sector (McGrattan-Prescott (2001), Hall (2001)). Authors have also emphasized the substantial increase in agents’ participation in the market, and the apparent decrease in the Baby Boomers’ risk aversion (Heaton-Lucas (1999)). Similar “new economy” arguments, based on the technical innovations of the immediate postwar period, and increased participation in the stock market have also been used to justify the bull market of the fifties (see Malkiel (1990) and Shiller (2000)). The declining phase, from 1965 to 1982, has proved more difficult to justify, as documented by the well-known paper of Modigliani and Cohn (1979). They argue that standard arguments based on real earnings and interest rates cannot account for the 60% decline in the real S&P index between 1965 and 1977, and find themselves forced to conclude that the only way of explaining the sustained decrease in stock prices is that “investors, at least in the presence of unaccustomed and fluctuating inflation, are unable to free themselves from certain forms of money illusion”, using the nominal rather than the real rate of interest to value equity.

While these explanations probably capture important elements underlying the behavior of stock prices in each of the episodes, they cannot readily be pieced together to form a coherent explanation of the stock market over the whole sixty-year period. The idea motivating this paper is that there is perhaps a common thread which could provide a unified explanation for the alternating bull and bear markets over the whole period. Since the turn of the century, the livebirths in the US have gone through alternating twenty-year phases of baby booms and baby busts: the low birth rate during the Great Depression was followed by the Baby Boom of the fifties and the subsequent Baby

¹These explanations, while couched in the language of analytical models, are essentially the same as those given by Irving Fisher (1929) for the stock market boom of the 1920’s.

Bust of the seventies. These birth waves have resulted in systematic temporal changes in the age composition of the population in the postwar period.

The fact that the most recent stock market boom coincided with the period in which the generation of Baby Boomers born after the war reached middle age, has led Wall Street participants and the financial press to attribute part of the rise in prices to the investment behavior of the Baby Boomers preparing for their retirement. Professional economists have on the whole been sceptical of the connexion between the two phenomena, but nevertheless a literature has emerged (Brooks (2001), Poterba (2001), Abel (2001) (2003)) beginning with a paper by Bakshi and Chen (1994) documenting the striking relation between the average age of the US population over 20 and the movement of the real S&P price index since 1945. Bakshi and Chen construct an infinite horizon representative-agent pricing model to account for the behavior of security prices. The representative agent is a “stand-in” for all agents, having an age which is the average age of the population: the key assumption is that the relative risk aversion of the representative agent is an increasing function of the average age. This provides an interesting short-cut to the idea that agents have a different exposure to the risk of equity at different stages of their life cycle: young agents, expecting to receive regular wages for a long period, are less exposed to the risk of securities than middle-age agents who face the prospect of retirement, in which their consumption depends directly on the uncertain return on their savings. In this way fluctuations in the average age can induce fluctuations in the equity premium.

In this paper we seek to explore more directly the relation between the life-cycle portfolio behavior of agents, changes in the age structure of the population and the resulting changes in security prices over time. As is commonly observed, agents have distinct financial needs at different periods of their life—typically borrowing when young, investing for retirement when middle-aged and disinvesting in retirement. The stock market is, along with assets like real estate and bonds, a vehicle for the savings of agents preparing for their retirement. It seems plausible that a large cohort of middle-aged agents seeking to save for their retirement will push up the prices of the securities, while prices will be depressed in periods where the middle-aged cohort is small.

To test the idea, and see how much of the variation in security prices can be explained by the combination of life cycle behavior and changing demographic structure, we study the equilibria of an overlapping generations exchange economy calibrated to the stylized facts on agents’ lifetime income patterns, the payoffs of the securities and the demographic structure in the US for the post war period. The livebirth process for the US in the twentieth century can be approximated by alternating twenty-year spans of high and low birthrates, and this permits the lifespan of an agent to

be conveniently broken into three active periods of twenty years,² youth, middle age and retirement. While we study the deterministic model with finer time periods, for the general stochastic model in which agents' income and equity payoffs are random, to keep the analysis tractable we adopt the twenty-year period.

The first part of the paper studies the equilibria of a simple deterministic model in which generations are alternately large and small, and equity in a fixed asset (land or "trees") yields a constant stream of dividends each period: the sizes of the generations, and the dividends and wages for the young and middle-aged are chosen in accordance with historical averages for the US. This certainty model gives the order of magnitude of the change in security prices which can be attributed to demographic changes: the lower the intertemporal elasticity of substitution in preferences the greater the fluctuation in equity prices. The qualitative behavior of the equilibrium is not significantly changed when the model is enriched to accommodate more realistic features such as Social Security, bequests, or shorter time periods. The equilibria of our model can also be related to the equilibria of the standard Diamond model with production. By introducing adjustment costs for capital we obtain a parametrized family of models which includes at one extreme the Diamond model, with zero adjustment costs, and at the other extreme models with progressively higher adjustment costs whose equilibria converge to the equilibrium of the exchange economy. As the adjustment costs increase, the fluctuations in equity prices increase, so that the exchange model provides a convenient setting for establishing an upper bound on the fluctuations in prices.

The relation between demographic structure and security prices is seen in its most striking form in the model with shorter time periods: in a stationary equilibrium equity prices are precisely in phase with the demographic structure, attaining a maximum when the number of middle-aged agents is at a maximum and the number of young agents is at a minimum, and a minimum when the numbers are inverted. Interest rates on the other hand are not in phase with the population cycle. The maximum for the interest rate occurs in the middle of the ascending phase of the equity prices, when the capital gain is at its maximum, and the minimum interest rate occurs in the middle of the descending phase of equity prices, when the capital loss is the greatest. Thus in the absence of shocks to the economy a cyclical birth process translates into a cyclical behavior of equity prices and interest rates, with interest rates "leading" equity prices by half a phase.

However in the deterministic model the fluctuations in prices caused by demographic forces alone are not sufficient to generate changes in equity prices of the order of magnitude observed in the US in the postwar period: bull markets have had peak to trough ratios of the order of 5 or 6,

²In the model an agent is inactive in the first twenty-year period of his life as a "child", neither earning income nor trading on the financial markets.

while the pure demographic model delivers increments of the order of 2 or 3. Thus “other forces ” must contribute a factor of order 2.5 to 3 to the changes in stock prices. The periods in which the middle-aged agents were numerous relative to the young (the fifties and early sixties and the late eighties and nineties) were also periods in which the economy was subject to positive shocks, while the period of the seventies when the young Baby Boomers were plentiful was marked by negative shocks (oil shocks, inflation). Thus in the second part of the paper we add business cycle shocks to incomes and dividends and calculate the stationary Markov equilibrium of the resulting economy by a method similar to that recently used by Constantinides-Donaldson-Mehra (2002).

The equity premium (the excess return stocks earn over the riskless interest rate) is the new variable of interest in the stochastic economy. Previous work has suggested that the equity premium observed historically is difficult to reconcile with a rational expectations model on two counts. First, the historical equity premium is too large to be rationalized by reasonable levels of risk aversion (Mehra-Prescott (1985)). Second, and most important for us, the observation that young people are more risk tolerant than old people (Bakshi-Chen 1994) suggests that the equity premium should be lowest when the proportion of young people is highest, exactly contrary to the historical record.

Our stochastic model sheds some light on the second problem. If there is a strong demographic effect, then the numerous young (and contemporaneous few middle aged) should rationally anticipate that investment returns will be relatively high. Since bonds are in zero aggregate supply, whereas stocks are in positive aggregate supply, and since wages do not vary so dramatically with demographic shifts, they should anticipate that a relatively high fraction of their future wealth will come from equity. Though the average risk tolerance is higher, the average exposure to risk is also higher, and so we find that in our model the equity premium is higher when the stock market is low, consistent with the historical record.

As for the problem that the historically observed equity premium in the US is above the ex ante equity premium generated by standard models, we have little new to contribute. We impose limited participation in equity markets (confining such participation to 50% of the population, consistent with recent history), and we find that the equity premium rises in our model, while preserving the demographic effect on equity prices. As is now standard, we attribute the larger historical equity premium to luck (see for example Brown, Goetzmann, and Ross (1995)).

Once business cycle shocks are introduced, the model delivers peak to trough ratios for equity prices and price-earning ratios which conform more closely with the post war data in the US. In Section 5 we compare the results of the model with the stylized facts on the bond and equity markets for the period 1910-2002. The variables which most closely fit the predictions of the model

are the price-earnings ratio and the rate of return on equity. Since 1945 the price-earnings ratio has strikingly followed the cyclical pattern of the medium-young ratio in the population while the rate of return on equity has a significant relation with the changes in the medium-young ratio, as predicted by the model. The behavior of interest rates departs much more from the predictions of the model, and only after 1965 does the interest rate have a significant relation with the change in the medium-young ratio. Moreover interest rate variations have been smaller than in the calibrated model, with the result that the level and variability of the equity premium is higher in the data than in the model.

Section 2 presents the basic structure of the model and studies the equilibria of the simple deterministic economy with fluctuations in cohort size. Section 3 examines the effect of introducing more realistic features such as bequests, family size, Social Security and shorter time periods: it also studies the relation between the equilibria of the exchange and associated production economy with adjustment costs. Section 4 studies the equilibria of the stochastic economy, while Section 5 compares the predictions of the model with the behavior of the stock and bond markets in the US during the last century, and briefly presents some evidence on equity markets and demography for Germany, France, U.K. and Japan. Section 6 concludes with cautionary remarks on the use of the model for predicting the future course of prices due to the globalization of equity markets.

2. Simple Model with Demographic Fluctuation

Consider an overlapping generations exchange economy with a single good (income) in which the economic life of an agent lasts for three periods: young, middle-age and retired. All agents have the same preferences and endowments and only differ by the date at which they enter the economic scene. Their preferences over lifetime consumption streams are represented by a standard discounted sum of expected utilities

$$U(c) = E\left(u(c^y) + \delta u(c^m) + \delta^2 u(c^r)\right), \quad \delta > 0 \quad (1)$$

where $c = (c^y, c^m, c^r)$ denotes the random consumption stream of an agent when young, middle-aged and retired. For the calibration, u will be taken to be a power utility function

$$u(x) = \frac{1}{1-\alpha} x^{1-\alpha}, \quad \alpha > 0$$

where α is the coefficient of relative risk aversion. Since a “period” in the model represents 20 years in the lifetime of an agent, we take the discount factor to be $\delta = 0.5$ (corresponding to a annual discount factor of 0.97).

In this Section we outline the basic features of the model and explain how we choose average values for the calibration: these average values can be taken as the characteristics of a deterministic exchange economy whose equilibrium is easy to compute, and this provides a first approximation for the effect of demographic fluctuations on the stock market.

Each agent has an endowment $w = (w^y, w^m, 0)$ which can be interpreted as the agent’s labor income when young and middle-aged, and income in retirement is zero. There are two financial instruments—a riskless bond and an equity contract—which agents can trade to redistribute income over time (and, in the stochastic version of the model, to alter their exposure to risk). The (real) bond pays one unit of income (for sure) next period and is in zero net supply; the equity contract is an infinite-lived security in positive supply (normalized to 1), which pays a dividend each period. Agents own the financial instruments only by virtue of having bought them in the past: they are not initially in any agent’s endowment. In this section the dividends and wage income are nonstochastic, so that the bond and equity are perfect substitutes: in Section 4 where we introduce random shocks to both dividends and wages, bond and equity cease to be perfect substitutes.

Since we want to study the effect of the fluctuations in the age composition of the population on capital market prices rather than the effect of a general growth of the population, we assume that the model has been “detrended” so that the systematic sources of growth of dividends and wages arising from population growth, capital accumulation and technical progress are factored out. The sole source of variation in total output comes from the cyclical change in the demographic structure, to which we now turn, and from the random “business cycle” shocks introduced in Section 4.

Demographic Structure. Livebirths induce the subsequent age structure of the population: the annual livebirths for the US during the 20th century³ are shown in Figure 1. If the livebirths for a sequence of twenty adjoining years are grouped together into a cohort, then the number of births can be approximated by five twenty-year periods which create the alternatively large and small cohorts known as the 10’s, 30’s, 50’s, 70’s and 90’s generations.

We seek the simplest way of modeling this alternating sequence of generation sizes: time is divided into a sequence of 20 year periods and we let

$$\Delta_t = (\Delta_t^y, \Delta_t^m, \Delta_t^r)$$

denote the *age pyramid* at date t , where Δ_t^y denotes the number of young, Δ_t^m the number of middle-aged, and Δ_t^r the number of retired agents.⁴ We assume that in each odd period a large

³Historical Statistics of the United States, Series B1, and Bureau of the Census.

⁴An individual’s “biological life” is divided into 4 periods, 0-19 (child), 20-39 (young) 40-59 (middle age), 60-79

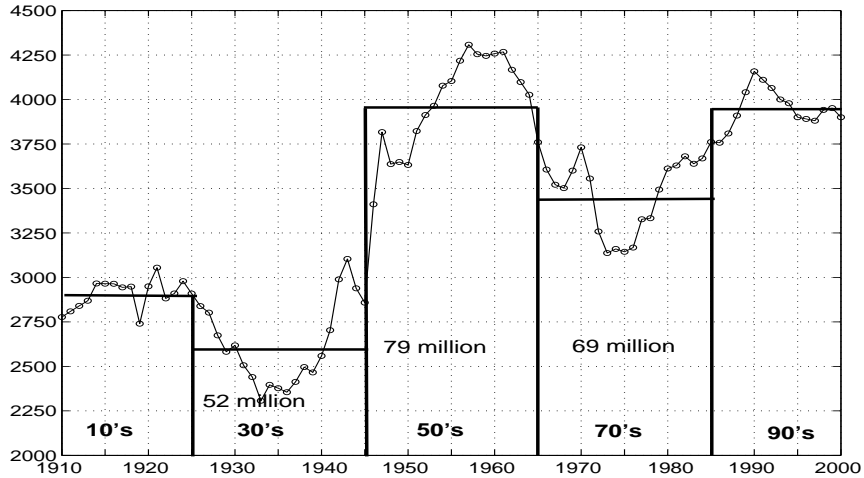


Figure 1: US livebirths and the 5 cohorts of the 20th century

cohort (N) enters the economic scene as young, while in each even period a small cohort (n) enters: thus the age pyramid is $\Delta_t = (N, n, N)$ in every odd period, and $\Delta_t = (n, N, n)$ in every even period. We let $\Delta_1 = (N, n, N)$ and $\Delta_2 = (n, N, n)$, and call $\Delta = (\Delta_1, \Delta_2)$ the set of pyramid states.

Because the typical lifetime income of an individual is small in youth, high in middle age and small or nonexistent in retirement, agents typically seek to borrow in youth, invest in equity and bonds in middle age, and live off this middle-age investment in their retirement. As we shall see, this life-cycle portfolio behavior implies that the relative size of the middle and young cohorts $\frac{\Delta_t^m}{\Delta_t^y}$, plays an important role in determining the behavior of the equilibrium prices on the bond and equity markets. For the above alternating cohort structure, the *medium-young cohort ratio* (MY, for short) alternates between $\frac{n}{N} < 1$ in odd periods and $\frac{N}{n} > 1$ in even periods.

The demographic structure shown in Figure 1 is not perfectly stationary. There were 52 million livebirths in the Great Depression generation from 1925-1944, and 79 million born in the Baby Boom from 1945-1964; these two generations traded as medium and young in the period 1965-1984. In the Baby Bust (Xer) generation between 1965 and 1984 births fell, but only to 69 million; the Baby Boom and Xer generations have traded with each other from 1985-2004. The Echo Baby Boom generation born between 1985 and the present seems headed for the same order of magnitude as the Baby Boom generation; the Echo Baby Boom generation and the Xer generation will trade

(retired); the agent's "economic life" (earning income, trading on financial markets) begins when the agent is young. For simplicity we include only the "economic agents" in the age pyramid: the Δ_t^y young were the children born at date $t - 1$.

with each other from 2005-2024.

In order to mimic the actual history with a stationary economy, we are thus led to study two cases: in the first $n = 52$ and $N = 79$ which are the relative sizes of the Great Depression and the Baby Boom generations. This is the case for which the demographic effect is the strongest and whose equilibrium is studied in the body of the paper. Given that the Baby Bust (Xer) generation born 1965-84 was larger (69 million) than the Great Depression generation, this equilibrium will somewhat exaggerate the increase in price that a calibrated model predicts for the period 1985-2004, and the predicted decline in prices when the Baby Boomers retire. To correct for this, we compute the equilibrium for a second case in which N is kept at 79, and the smaller cohort size is $n = 69$. The equilibrium values for this case are given in Appendix C.

Calibrating the age pyramid using the number of livebirths neglects immigration, which plays an important role in the demography of the US. However we show in Appendix A that taking the immigrants into account essentially leaves unchanged the ratio of the cohorts of middle-aged to young for the periods 1965-1984 and 1985-2004 which we have taken as reference values for the calibration.

Wage Income and Dividends. The exchange economy is viewed as an economy with “fixed production plans”. Equity in land or trees yields a steady stream of dividends D each period, and each young and middle-aged worker produces output w^y and w^m respectively. To calibrate the relative shares of wage income going to young and middle-aged agents, we draw on data from the Bureau of the Census shown in Figure 2: the maximum ratio of the average annual real income of agents in the age-groups 45-54 and 25-34 is 1.54: we round this to 1.5 and calibrate the model on the basis of a wage income of $w^y = 2$ for each young agent and $w^m = 3$ for each middle-aged agent. Since the agents have homothetic (CES) preferences, the absolute levels of endowments and dividends do not influence the relative prices or relative consumption levels, which will be the primary focus of the study.

Since the wage income of middle-aged agents is greater than that of the young, a change in the age pyramid leads to a change in the total wages in the economy: the total wage is greater when the middle-aged generation is large (pyramid Δ_2) than when the young generation is large (pyramid Δ_1). Since the active population is constant, this increase in wages has to be interpreted as coming from an increase in the average productivity of labor: implicitly the model presumes that middle-aged agents are more experienced and productive than the young since they are paid higher wages.

When $(N, n) = (79, 52)$, the total wages alternate between $341 = 79 \times 3 + 52 \times 2$ and $314 = 79 \times$

$2+52 \times 3$. When the demographic structure is less skewed, as in the economy with $(N, n) = (79, 69)$, the total wage income alternates between $375 = 79 \times 3 + 69 \times 2$ and $365 = 79 \times 2 + 69 \times 3$.

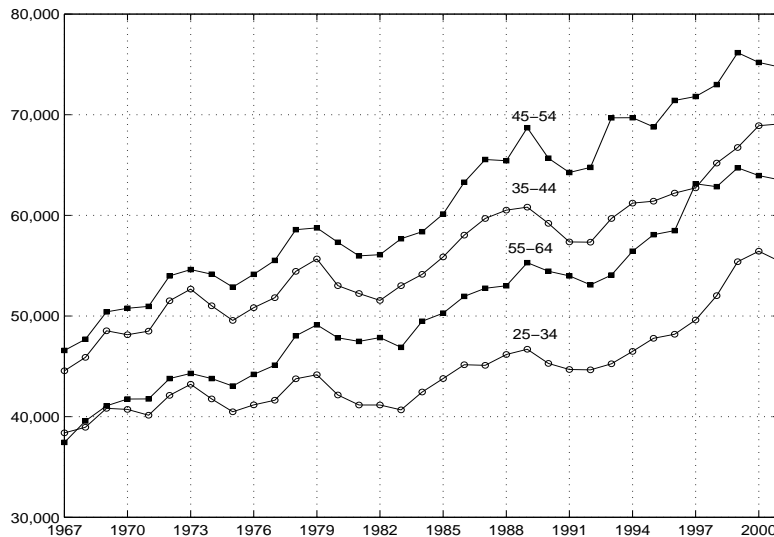


Figure 2: *Real wage income of different age cohorts over time (1999 dollars)*

Land produces output which is distributed as dividends to the equity holders. We take the ratio of dividends to wages to be of the same order of magnitude as the ratio of (generalized) dividends to (generalized) wages in the National Income and Products Accounts. More precisely we aggregate the categories “Compensation to Employees” and “Proprietors’ Income” to obtain generalized wages. The rationale for this is that the category “Proprietor’s Income” contains the net income of unincorporated business (farmers, doctors, lawyers, partners, small business proprietors) which is just wage income⁵ from the perspective of our model: this combined category is on average 80% of national income.⁶ From the remaining 20% we subtract the retained earnings of corporations (which in our model can be interpreted as the investment made for maintaining the land), leaving an average share of 15.5% of national income:⁷ we call this aggregate generalized dividends. Thus we assume in the model that the average ratio of dividends to wages is $15.5/80 \simeq 0.19$. In the economy in which $(N, n) = (79, 52)$ we take $D = 0.19(341 + 314)/2 \simeq 62$ and when $(N, n) = (79, 69)$ we take $D = 0.19(375 + 365)/2 \simeq 70$.

For the demographic structure $(N, n) = (79, 52)$ in which there is a large variation in the cohort

⁵McGrattan and Prescott (2001) attribute 80% of the Proprietor’s Income to wages and 20% to dividends.

⁶The reference data set is the annual National Income and Products Accounts from 1959 to 1999.

⁷Since the order of magnitudes are similar (around 3% of aggregate income) we consider the taxes paid by corporations are the interests received on government securities.

ratio, total income (wages plus dividends) is on average 7.2% higher with Δ_2 than with Δ_1 : for the case $(N, n) = (79, 69)$ with its smaller variation in the cohort ratio, the output difference between Δ_2 and Δ_1 is 2.3%.

Pure Demographic Equilibrium. When the only source of change in the economy comes from fluctuations in the demographic structure, it is straightforward to describe and solve for the stationary equilibrium. Let q_t^b be the price of the bond at time t , that is, the amount of good that is required in period t to buy one unit of output in the next period; then $q_t^b = 1/(1 + r_t)$, where r_t is the interest rate from period t to $t + 1$. It is easy to show that there is an equilibrium in which $q_t^b = q_1$ whenever t is odd, and $q_t^b = q_2$ whenever t is even. Since agents can use the bond or the equity to transfer income across the different periods of their life, they can equalize the present value of their consumption to the present value of their income. Agents who are young in an odd periods choose a consumption stream $(c^y(1), c^m(1), c^r(1))$ so as to maximize the utility function (1) subject to the budget constraint

$$c^y(1) + q_1 c^m(1) + q_1 q_2 c^r(1) = w^y + q_1 w^m + q_1 q_2 w^r = 2 + q_1 3 \quad (2)$$

while agents who are young in even periods choose $(c^y(2), c^m(2), c^r(2))$ so as to maximize (1) under the budget constraint

$$c^y(2) + q_2 c^m(2) + q_1 q_2 c^r(2) = w^y + q_2 w^m + q_1 q_2 w^r = 2 + q_2 3 \quad (3)$$

In equilibrium we must have

$$\begin{aligned} Nc^y(1) + nc^m(2) + Nc^r(1) &= N \times 2 + n \times 3 + D \\ nc^y(2) + Nc^m(1) + nc^r(2) &= n \times 2 + N \times 3 + D \end{aligned} \quad (4)$$

Since there is no uncertainty the bond and equity must be perfect substitutes in each period. From the no-arbitrage property of equilibrium the rate of return on the equity market and on the bond market must be the same. Thus if bond prices alternate between q_1 and q_2 , then the price of equity must alternate between q_1^e and q_2^e , where

$$\frac{D + q_2^e}{q_1^e} = \frac{1}{q_1} = 1 + r_1, \quad \frac{D + q_1^e}{q_2^e} = \frac{1}{q_2} = 1 + r_2$$

If $q_1 < q_2$, or equivalently if $r_1 > r_2$, then it must be that $q_1^e < q_2^e$: thus interest rates are high when equity prices are rising, and low when equity prices are decreasing. Solving the rate-of return equations yields the relation between bond and equity prices

$$q_1^e/D = (q_1 q_2 + q_1)/(1 - q_1 q_2) \quad \text{and} \quad q_2^e/D = (q_1 q_2 + q_2)/(1 - q_1 q_2) \quad (5)$$

Note that the same result could have been obtained by expressing that the price of equity is equal to the discounted value of its dividends

$$\begin{aligned} q_1^e &= Dq_1 + Dq_1q_2 + Dq_1q_2q_1 + Dq_1q_2q_1q_2 + \dots \\ q_2^e &= Dq_2 + Dq_2q_1 + Dq_2q_1q_2 + Dq_2q_1q_2q_1 + \dots \end{aligned}$$

A convenient way of assessing the level of equity prices is to compute the price-dividend ratio (PD) defined by $PD(k) = q_k^e/(D/20)$, $k = 1, 2$, where the dividends are expressed on a yearly basis. To compare the results of the model with the well publicized price-earnings ratios of corporate equity, a good rule of thumb is to divide them by 2, since on average corporate firms distribute half their earnings in dividends.⁸ In the text we will often refer to $PE \equiv PD/2$ as the “price-earning ratio”. In the same way, rather than reporting the interest rate on a twenty-year period, we report the annualized interest rate r_k^{an} defined by $(1 + r_k^{an})^{20} = 1 + r_k$, for $k = 1, 2$.

Properties of Equilibrium. If the bond prices were to coincide with the consumer discount rate, $q_1 = q_2 = 0.5$, then individuals would attempt to completely smooth their consumption, demanding the stream $(c^y, c^m, c^r) = (2, 2, 2)$. But then, in the case where the population structure is $(N, n) = (79, 52)$, in odd periods the aggregate excess demand for consumption would be $79(2 - 2) + 52(2 - 3) + 79(2 - 0) - 62 = 44$, while in even periods it would be $52(0) + 79(-1) + 52(2) - 62 = -37$. Thus in odd periods there is excess demand for consumption as the retired agents consume beyond their income more than the middle-aged save for their retirement, while in even periods when the middle-aged cohort is large, there is excess demand for savings as those households seek to invest for their retirement. To clear markets, the interest rates must adjust, discouraging consumption (stimulating savings) in odd periods, and discouraging saving (stimulating consumption) in even periods: as a result equilibrium bond prices must be below 0.5 in odd periods, and above 0.5 in even periods.

But, if $q_1 < q_2$, then budget constraints of agents in the odd and even cohorts are not the same: the difference is the price of middle-aged consumption. Let $U(1)$ (resp. $U(2)$) be the maximum utility that can be obtained facing the first (resp. second) budget constraint. Since agents are always saving (for their retirement years) when middle-aged, then $q_1 < q_2$ implies that $U(1) < U(2)$, so that agents born in small cohorts are favored relative to those born in large cohorts. We call this the *favored cohort effect*.

Calculating the stationary equilibrium for the economy with $(N, n) = (79, 52)$, and utility

⁸For the period 1951-2000 the average payout ratio for the firms in the S&P500 Index was 0.51.

function parameter $\alpha = 4$, gives equity prices, annual interest rates, and PE ratios

$$(q_1^e, q_2^e, r_1^{an}, r_2^{an}, PE_1, PE_2) = (52, 120, 6.4\%, -0.3\%, 8.4, 19.4)$$

the consumption streams $c(i) = (c^y(i), c^m(i), c^r(i))$, $i = 1, 2$, and utilities

$$(c(1), c(2), U(1), U(2)) = ((1.8, 2, 1.7), (2.4, 2, 2.3), (-.1, -.05))$$

As expected, when the large cohort is young and the small cohort middle-aged, the equity price is low (52), with a price-earnings ratio around 8; when the large cohort moves into middle-age and seeks to save for retirement, the equity price is more than 2 times higher ($q_2^e/q_1^e = 2.3$), the PE ratio increasing to 19. When the equity price is low and going to increase the interest rate is high (6.4%) and falls to -0.3% when equity price is high and going to decrease. As predicted by the favored cohort effect, the smaller generation is better off ($-.05 > -.1$).

When the demographic structure (N, n) gets less skewed, the disequilibrium implied by the bond prices $q_1 = q_2$ is less pronounced, so that bond and equity prices do not need to fluctuate as much to establish equilibrium. For a given demographic structure, if the aversion to consumption variability is lower, the variation in prices needed to establish an equilibrium is also lower. The following table shows the effect on equilibrium prices of decreasing the difference in cohort sizes and of varying the coefficient α determining the elasticity of substitution of consumption across periods (equal to $1/\alpha$).

Table 1: Effect of intertemporal elasticity parameter and cohort sizes on equilibrium												
	$N = 79, n = 52$						$N = 79, n = 69$					
	Pyramid Δ_1			Pyramid Δ_2			Pyramid Δ_1			Pyramid Δ_2		
	q_e	r^{an}	PE	q_e	r^{an}	PE	q_e	r^{an}	PE	q_e	r^{an}	PE
$\alpha = 2$	55	5.3%	8.8	91	1.3%	14.6	68	4%	9.8	81	2.7%	11.6
$\alpha = 4$	52	6.4%	8.4	120	-0.25%	19.4	67	4.4%	9.5	89	2.2%	12.6
$\alpha = 6$	51	7.3%	8.2	147	-1.3%	23.8	66	4.7%	9.4	94	1.8%	13.5

3. Robustness of Pure Demographic Equilibrium

Family, Bequests, and Social Security. The model of the previous section can be viewed as the simplest model for studying the consequences for the stock market of fluctuations in demographic structure. However it abstracts from a number of important features which alter agents' needs to

redistribute income over time. In particular, the presence of bequests, of social security payments in retirement, or the fact that young agents have to provide for their children, alters the need for intertemporal savings. In this section we study how the predictions of the basic model are modified by the introduction of these factors.

Implicit in the model is that parents from a large cohort have on average small families—each agent of a large cohort has $\nu_1 = n/N$ children—while parents from a small cohort have large families, i.e they have on average $\nu_2 = N/n$ children. The Easterlin hypothesis (Easterlin (1987)) provides an explanation for such fluctuations in the fertility ratio, which can be rephrased in the setting of our model as follows. The young of any generation form their material aspirations as children in the households of their parents: in deciding their family size they compare the material prospects they can offer to their children with the aspirations they have formed as children in their parents' households. Since the young in a small cohort have greater lifetime income than their parents who come from a large cohort, they feel that they can offer their children material conditions that exceed their aspirations, and are led to choose a large family size. Conversely the young of a large cohort facing difficult conditions but having formed high aspirations choose a small family size. This suggests a simple, albeit highly stylized, way of linking the choice of family size (fertility) and hence, at the social level the size of the cohorts, to the underlying economic conditions.

Let us now take into account the fact that parents provide for the consumption of their children. Let ν denote the number of children and let η denote the consumption equivalent of a child; then the utility of a young parent is $u(c^y/(1 + \eta\nu))$ where c^y is the parent's consumption expenditure. Assume that agents give bequests to their children and let b denote the bequest transferred by retired parents to their middle-aged children. We take the utility in the retired period to be $u(c^r, b) = (c^r)^{1-\beta}b^\beta$, $0 < \beta < 1$. In practice individuals end up with wealth at the time of their death, both because they hold precautionary balances against the uncertain time of death and because they derive direct utility from the bequests they leave to their children.⁹ We model the combination of these two motives by assuming that the utility is a function of the bequest and not of the bequest per child. The preferences of the representative agent, which replace (1), are given by

$$U(c, b) = \frac{1}{1 - \alpha} \left[\left(\frac{c^y}{1 + \eta\nu} \right)^{1-\alpha} + \delta(c^m)^{1-\alpha} + \delta^2 \left((c^r)^{1-\beta} b^\beta \right)^{1-\alpha} \right] \quad (6)$$

To complete the model we add the transfers to an agent's life time income arising from a pay-as-you-go social security system. We assume that each retired agent (regardless of cohort size) receives

⁹See Modigliani ((1986),(1988)) for a discussion and estimation of the proportion of wealth transferred through bequests.

a transfer $\theta \geq 0$ and that the labor income received in pyramid Δ_1 (resp Δ_2) is taxed at the rate τ_1 (resp τ_2), where τ_1 and τ_2 are chosen so that the social security budget is balanced. The life-time budget constraint of an agent young in pyramid Δ_i , $i = 1, 2$ can then be written as

$$c^y(i) + q_i c^m(i) + q_i q_{i+1} (c^r(i) + b(i)) = w^y(1 - \tau_i) + q_i \left(w^m(1 - \tau_{i+1}) + \frac{b(i+1)}{\nu_{i+1}} \right) + q_i q_{i+1} \theta, \quad i = 1, 2 \quad (7)$$

where $i + 1$ is taken modulo 2 ($1+1=2$, $2+1=1$). In a stationary equilibrium with family, bequests and social security $((\bar{c}(i), \bar{b}(i), \bar{\tau}_i, \bar{q}_i), i = 1, 2)$, young agents in cohort Δ_i maximizes (6) subject to (7), the market clearing equations (4) hold and the social security tax satisfy the balance-budget equations

$$(Nw^y + nw^m)\bar{\tau}_1 = N\theta \quad (nw^y + Nw^m)\bar{\tau}_2 = n\theta$$

The equilibrium equity prices are then given in terms of (\bar{q}_1, \bar{q}_2) and D by (5).

The equilibrium depends on three new coefficients (η, β, θ) which parameterize the child equivalent consumption, the strength of the bequest motive, and the magnitude of the social security transfer. By setting two of these coefficients to zero we can study how each parameter affects the equilibrium; by choosing a representative value for each parameter we can examine their combined effect on the equilibrium. We follow the accepted practice and let $\beta = 0.6$ be the equivalent consumption of a child; we take $\beta = 0.3$ to generate a ratio of bequests to aggregate income between 15.5% and 18.5% of aggregate income which is the “consensus estimate” reported by Modigliani (1988). At the end of the 90’s the ratio of social security transfers and medicare benefits to national income was of the order of 8%: by choosing $\theta = 0.5$ as the per-capita social security transfer we obtain a ratio of social security transfers to total income of 10.5% in pyramid Δ_1 and 6.45% in pyramid Δ_2 . The table that follows shows the separate and combined effects of the three parameters on the equilibrium. The preference coefficient is set to $\alpha = 4$ and the demographic parameters are $(N, n) = (79, 52)$.

Poterba (2001) has argued that the presence of bequests will attenuate—if not cancel—the decrease in security prices that is expected when the Baby Boomers go into retirement, since they will not attempt to sell all their securities. However if all generations transfer bequests, it still implies that a large generation will need to sell the share of its wealth that it needs as retirement income to a smaller generation of middle-aged savers. Abel (2001) has shown that in his model with production and two-period-lived agents, the presence of bequests does not change the equilibrium. In our model adding a bequest motive does lower the ratio of equity prices, but it does not cancel the effect: the main effect is to lower the interest rate since agents in both cohorts have more income in middle age by virtue of the bequests of their parents, and thus save more for retirement. The

Table 2: Bequests, Family and Social Security

	$\beta = 0, \eta = 0, \theta = 0$		$\beta = 0.3, \eta = 0, \theta = 0$		$\beta = 0, \eta = 0.6, \theta = 0$		$\beta = 0, \eta = 0, \theta = 0.5$		$\beta = 0.3, \eta = 0.6, \theta = 0.5$	
q^e	52	120	97	172	23	62	26	73	24	53
PE	8.5	19	15.5	28	3.7	10	4.2	12	3.9	8.5
r^{an}	6.4%	-0.3%	4.5%	-0.4%	8.8%	1.6%	8.6%	0.9%	8%	2.5%
b	0	0	0.7	1	0	0	0	0	0.8	1
τ	0	0	0	0	0	0	12.6%	7.6%	12.6%	7.6%
q_2^e/q_1^e		2.3		1.8		2.7		2.8		2.2

smaller ratio of equity prices comes partly from the fact that the small generation when middle-aged receives a higher per-capita bequest ($0.7/\nu_1=1.06$) than the large generation ($1/\nu_2=0.66$), the larger income tending to compensate for the smaller size of the cohort in the aggregate savings function.

The other parameters, the child equivalent consumption η and the social security benefit θ have the reverse effect, increasing interest rates and increasing the ratio of equity prices. The young parents' demand for consumption for their children tends to increase the demand for borrowing or equivalently to decrease the savings rate in each pyramid. Introducing social security benefits decreases the income of agents when they are working and increases their income when retired, thus also decreasing the savings rate. When the three effects are combined the forces causing interest rates to be high prevail, lowering the price-earnings ratios, the ratio of equity prices being of the same order of magnitude as in the simple model. If this more detailed institutional model was chosen as the reference model, we would need to increase the discount factor to obtain more realistic interest rates and PE ratios. For example, with $\delta = (0.99)^{20} = 0.82$ and the same parameters as in the last two columns of Table 3, the equilibrium is

$$(q_1^e, q_2^e, r_1^{an}, r_2^{an}, PE_1, PE_2) = (51, 91, 5.6\%, 1\%, 8, 15)$$

The relatively low discount factor $\delta = (0.97)^{20} = 0.5$ used in the simple exchange model, can then be viewed as a convenient proxy for these more realistic institutional features which are left out of the model and which lower the savings rate.

Comparing Equilibrium of Exchange and Production Economy. A relatively large varia-

tion in equity prices arising from a changing demographic structure hinges on two hypotheses: the assumption that the underlying asset (equity) is in fixed supply, and the assumption of a low degree of intertemporal substitution in preferences—we have taken $\alpha = 4$ as the reference case, with an intertemporal elasticity of substitution of $1/4$. In this section we study the effect of replacing the assumption that the asset is in fixed supply by the assumption that the asset is “capital” which is producible. We show that in the presence of adjustment costs—which permit equity prices to differ from the capital stock—the equilibria of the production economy are similar to those of the exchange economy, and essentially coincide when the adjustment costs are sufficiently high.

Consider an economy with the same consumer side as in the exchange economy, but in which wages and dividends are endogenous. Each agent is endowed with one unit of labor when young and middle-aged, and supplies labor inelastically. The efficiency of a unit of young labor is $2/3$ the efficiency of a unit of a middle-aged labor. The effective labor supply in pyramid Δ_1 or Δ_2 is thus

$$L_1 = 2/3N + n, \quad L_2 = 2/3n + N \quad (8)$$

There is a single (representative, infinitely-lived) firm which uses capital and labor to produce the single output with the production function $F(K, L) = AK^aL^{1-a}$. At the beginning of period t the firm has K_t units of capital, inherited from period $t - 1$. It hires L_t units of (effective) labor paid at the wage rate w_t , and after producing $F(K_t, L_t)$ units of output is left with $(1 - \beta)K_t$ units of capital, where β , with $0 \leq \beta \leq 1$, is the depreciation rate. The firm then decides to spend I_t on investment, where investment is subject to convex adjustment costs¹⁰

$$K_{t+1} = (1 - \beta)K_t + I_t - \gamma(K_{t+1} - K_t)^2 \quad (9)$$

with $\gamma \geq 0$. The cost of replacing the depreciated units βK_t of capital is equal to βK_t , but if the firm wants to change its capital stock then an adjustment cost, convex in the change $|K_{t+1} - K_t|$, has to be incurred. If $\gamma = 0$ there is no adjustment cost and the model is the standard Diamond model.

After paying for wages and investment the firm distributes the rest of its output as dividend

$$D_t = F(K_t, L_t) - w_t L_t - I_t \quad (10)$$

¹⁰We introduce a cost to modifying the level of capital to capture the fact that altering firm size by introducing new plant or introducing more capital intensive technology involves a cost over and above the cost of the materials involved, while the maintenance of depreciated capital involves no additional cost. We make the cost symmetric in increases or decreases of capital since it is typically costly to uninstall used capital which is not worth maintaining. Equation (9) is different from the equation of evolution of capital $K_{t+1} = G(K_t, I_t)$ introduced by Basu (1987) and adopted by Abel (2003) where G is a Cobb-Douglas function. This latter equation expresses decreasing returns to investment, but does not necessarily involve a cost for changing the level of capital.

The stock market opens and agents buy and sell shares of the firm at price q_t^e . For simplicity we assume that the bond is not used¹¹, and define the rate of interest as the rate of return on equity

$$1 + r_t = \frac{D_{t+1} + q_{t+1}^e}{q_t^e} \quad (11)$$

As in the exchange case we compute the stationary equilibrium of the economy with production. To this end, let (w_i, q_i^e, r_i) denote the wage, equity price and interest rate in pyramid Δ_i , $i = 1, 2$; similarly let $(c(i), z_e(i)) = (c^y(i), c^m(i), c^r(i), z_e^y(i), z_e^m(i))$ denote the consumption stream and equity holdings of an agent who is young in pyramid Δ_i , and let (K_i, I_i, D_i) denote the capital inherited by the firm, the investment undertaken to form the capital next period and the dividend distributed in pyramid Δ_i , $i = 1, 2$. $(c(i), z_e(i))$ maximizes the utility function (1) subject to the sequence of budget constraints

$$\begin{aligned} c^y(i) &= 2/3w_i - q_i^e z_e^y(i) \\ c^m(i) &= w_{i+1} + (D_{i+1} + q_{i+1}^e)z_e^y(i) - q_{i+1}^e z_e^m(i) \\ c^r(i) &= (D_i + q_i^e)z_e^m(i) \end{aligned} \quad (12)$$

where $i + 1$ is taken modulo 2 ($1+1=2$, $2+1=1$). Note that these sequential budget constraints are equivalent to the single lifetime budget constraint

$$c^y(i) + q_i c^m(i) + q_i q_{i+1} c^r(i) = 2/3w_i + q_i w_{i+1}$$

with present-value prices $q_i = 1/(1 + r_i)$ which can be taken as equilibrating variables.

The firm is assumed to maximize its market value—the present value of its dividends—with perfect foresight of future prices. Thus at each period the choice of labor L_t must maximize $F(K_t, L_t) - w_t L_t$ given K_t , and the choice of capital K_{t+1} must maximize

$$-I_t(K_{t+1}, K_t) + \frac{1}{1 + r_t} (F(K_{t+1}, L_{t+1}) - w_{t+1} L_{t+1} - I(K_{t+2}, K_{t+1}))$$

given K_t, L_{t+1} , and K_{t+2} , where $I_t(K_{t+1}, K_t)$ is given by (9). This leads to the first-order conditions which define the optimal production plan of the firm in the stationary equilibrium: for $i = 1, 2$

$$\begin{aligned} F'_L(K_i, L_i) &= w_i \\ F'_K(K_{i+1}, L_{i+1}) &= r_i + \beta + 2\gamma(2 + r_i)(K_{i+1} - K_i) \end{aligned}$$

¹¹Introducing borrowing and lending on the bond only induces indeterminacy in portfolios and does not change the market value (equity plus debt of the firm).

where L_1 and L_2 are given by (8), so that the labor market clears. The market clearing conditions for the consumption good market are

$$Nc^y(1) + nc^m(2) + Nc^r(1) + I_1 = F(K_1, L_1)$$

$$nc^y(2) + Nc^m(1) + nc^r(2) + I_2 = F(K_2, L_2)$$

where $I_i = I(K_{i+1}, K_i)$. The simplest approach is to find the equilibrium $(\bar{c}(i), \bar{K}_i, \bar{r}_i, i = 1, 2)$, with the interest rates, or equivalently the present-value prices (\bar{q}_1, \bar{q}_2) , as equilibrating variables, and to deduce the financial variables $(\bar{D}_i, \bar{q}_i^e, \bar{z}(i))$ using (10), (11) and (12). As in the exchange economy the equity price is the present value of the dividends, which are now endogenous and vary between pyramids Δ_1 and Δ_2

$$\begin{aligned} \bar{q}_i^e &= \bar{D}_{i+1}\bar{q}_i(1 + \bar{q}_1\bar{q}_2 + (\bar{q}_1\bar{q}_2)^2 + \dots) + \bar{D}_i\bar{q}_1\bar{q}_2(1 + \bar{q}_1\bar{q}_2 + (\bar{q}_1\bar{q}_2)^2 + \dots) \\ &= \frac{\bar{D}_{i+1}\bar{q}_i + \bar{D}_i\bar{q}_1\bar{q}_2}{1 - \bar{q}_1\bar{q}_2} \end{aligned} \quad (13)$$

By varying the cost parameter γ in the above model we can now compare the equilibrium outcomes of a family of models of the stock market (see Table 3), starting with the Diamond equilibrium $\gamma = 0$, and ending with $\gamma = 0.1$, for which the equilibrium is close to that of the simple exchange economy analyzed above, which is shown in the last two columns. In this family of models the coefficient of relative risk aversion is fixed at $\alpha = 4$, the demography parameters at $(N, n) = (79, 52)$, and the production parameters A, a, β are chosen so that the Diamond equilibrium generates wages, dividends and output close to that of the exchange economy: this leads to the choice $A = 0.4, a = 0.2, \beta = 0.2$.

To compare the equilibria, let $s_t^y = q_t^e z_{e,t}^y$ (resp $s_t^m = q_t^e z_{e,t-1}^m$) denote the saving of the representative young (resp middle-aged) agent trading at date t . Since the total demand for equity must be equal to the one unit that exists, in equilibrium the total savings of the active agents of the economy must be equal to the price of the equity, which itself is equal to the present value of the dividends. The steady-state equilibrium on the savings market in the two pyramids can then be written as

$$Ns^y(\bar{r}_1, \bar{r}_2) + ns^y(\bar{r}_1, \bar{r}_2) = q^e(\bar{r}_1, \bar{r}_2) = \frac{\bar{D}_2\bar{q}_1 + \bar{D}_1\bar{q}_1\bar{q}_2}{1 - \bar{q}_1\bar{q}_2} \quad (14)$$

$$ns^y(\bar{r}_2, \bar{r}_1) + Ns^y(\bar{r}_2, \bar{r}_1) = q^e(\bar{r}_2, \bar{r}_1) = \frac{\bar{D}_1\bar{q}_2 + \bar{D}_2\bar{q}_1\bar{q}_2}{1 - \bar{q}_1\bar{q}_2} \quad (15)$$

In pyramid Δ_1 (equation (14)), the young and middle-aged agents receive the current interest rate r_1 on their savings; r_2 affects the young because it is the rate of return that they will obtain

Table 3: Comparing Production and Exchange Economy Equilibrium								
	<i>Diamond equilibrium</i> $\gamma = 0$		<i>Adjustment cost equilibrium</i> $\gamma = 0.01$ $\gamma = 0.1$				<i>Exchange equilibrium</i>	
	Δ_1	Δ_2	Δ_1	Δ_2	Δ_1	Δ_2	Δ_1	Δ_2
K	76	54	77	66	86	84		
Y	393	392	394	407	402	428	376	403
I	-7	33	5.5	26	16	19		
D	85	45	73	56	65	67	62	62
w	3	2.8	3	2.9	3.1	3	3	3
r^{an}	4.1%	3.1%	5.5%	1.4%	6.4%	0%	6.5%	-0.3%
q^e	54	76	52	96	53	117	52	120
PD	12.6	34	14	34	16	35	17	39
$\frac{q_2^e}{q_1^e}$		1.42		1.83		2.2		2.3
c	1.90 1.95 1.91	1.96 1.91 1.97	1.83 2.01 1.81	2.16 1.95 2.14	1.81 2.08 1.75	2.39 2.02 2.31	1.77 2.03 1.69	2.38 1.98 2.28

on their future savings in middle age, and r_2 affects the current middle-aged because it is the rate of return that they have obtained on the (possibly negative) savings that they have done when young. The same holds for equation (15) with the role of r_1 and r_2 reversed.

In the exchange economy $D_1 = D_2 = D$. If we tried $r_1 = r_2$, or equivalently $q_1 = q_2$, the equity prices q_1^e and q_2^e would coincide but the savings in pyramid Δ_2 with its large middle-aged cohort would exceed the saving in Δ_1 , so it cannot be an equilibrium. The present-value price q_2 must be larger than the present value price q_1 , or equivalently the rate of return r_2 must be lower than r_1 to generate a price of equity larger in pyramid Δ_2 (equation (15)) than in pyramid Δ_1 (equation (14)). Furthermore the difference between r_2 and r_1 must be significant because of the strong income effect in the supply of savings of the middle-aged cohort: when r_2 decreases, the savings of the large middle-aged cohort tend to increase to make up for the lost income when retired, and

when r_1 increases the wealth inherited from their youth increases¹², both effects leading to even larger savings, and the need for a larger equity price.

In the Diamond equilibrium, since the investment responds to interest rates, when $r_1 \neq r_2$ the dividends D_1 and D_2 differ in a way which reinforces the effect of the difference in rate of returns: a lower r_2 induces a higher investment I_2 : the savings of the large middle-aged cohort result in high investment for building the capital stock of the following period. The high capital stock of pyramid Δ_1 leads to a high dividend D_1 , both because the economy is productive and because I_1 is low. But this implies that the price of equity in pyramid 2 tends to be high both because the rate of return r_2 is low and because the dividend D_1 next period is high. Given that the work is divided between dividends and rate of return, the difference between r_1 and r_2 is much lower.

Introducing a convex adjustment cost tends to reduce the difference between K_1 and K_2 and to limit investment to the replacement of the depreciated capital. The dividends are then almost equal in the two pyramids and the rates of returns must vary more widely, like in the exchange economy, to establish equilibrium.

In each case the equity price is higher in pyramid Δ_2 when there are many middle-aged and few young than in pyramid Δ_1 when the ratio is inverted. However the more the equilibrating is done by the rate of return and the less by dividends, the larger the required difference in equity prices: the price in pyramid Δ_2 is 42% higher than in pyramid Δ_1 in the Diamond equilibrium, 83% higher with $\gamma = 0.01$, 120% with $\gamma = 0.1$, and 130% higher in the exchange economy. The variation in price/dividend ratio is however of the same order of magnitude in all the equilibria. Finally, the less variable the rate of return, the less marked the favored cohort effect. The large cohort is young and retired in states where the effective labor supply is lower: in the Diamond equilibrium there is more capital in these states and the output is the same as in the states where there is a large productive middle-aged cohort. There is still an effect an adverse effect of numbers, but it is much less marked than in the equilibria where the capital is constant and the output varies.

Equilibrium with Shorter Time Periods. An objection commonly presented to the idea that the increase in equity prices during the 90's was partly due to the saving behavior of the Baby Boomers reaching middle age is that the interest rates in the 90's were not historically low (see Poterba (2001)). The argument is that if the increase in prices was due to a higher than usual propensity to save due to the presence of a large generation in its saving years, then this high propensity to save should have forced interest rates down. The model which we have studied so far

¹²Typically in the equilibria of Table 3 the young of the large generation save and those of the small generation borrow.

(with 3-period lived agents) supports this argument, since the equity price alternates between high values (when the large cohort is middle-aged) and low values (when the small cohort is middle-aged), with the result that the rate of return—and hence the interest rate—alternates between low and high values. High equity prices coincide with low interest rates and conversely.

However the joint dynamics of interest rates and equity prices in a model with shorter time periods is, as we shall now show, more subtle. For if a large cohort entering middle age pushes the price of equity up, it induces capital gains on equity and thus raises the rate of return. The (short-term) interest rate which—modulo the equity premium when uncertainty is taken into account—coincides with the rate of return on equity, cannot be that low. To study how these two opposing forces—a high propensity to save pushing interest rates down, and capital gains pushing the rates up—are balanced in equilibrium, we study how security prices behave when the three active 20-year periods of an agent are each divided into 5 periods of 4 years, i.e. the time period is now 4 years, and the economic life of an agent lasts for 15 periods. Adopting a 4-year time period as the basic unit of time keeps the calculation manageable and suffices to show how a more detailed statement of the changing sizes of age cohorts over time carves itself precisely in a cyclical pattern for equity prices and interest rates, with an interesting phase shift in the path of interest rates relative to equity prices.

We continue to assume that the population cycle repeats itself every 40 years, or 10 periods, i.e. the number of agents entering the economy in period $t + 10$ is the same as the number of agents entering in period t . For $k = 1, \dots, 10$, let $n(k)$ denote the number of agents beginning their economic life in period t such that $t \equiv k \pmod{10}$ (we take 10 and not 0 to represent the class of multiples of 10). Each agent lives for fifteen periods (60 years, beyond childhood) indexed by $i = 1, \dots, 15$, and an agent in his i^{th} period of economic life is called an “agent of age i ”: such an agent entered $i - 1$ periods before, thus the number of agents of age i in period t is $\Delta_t^i = n((t - i + 1) \pmod{10})$. The age composition in period t is the same as in period $t + 10$, so that there are 10 different pyramids $\Delta_1, \dots, \Delta_{10}$ which keep repeating themselves. If $t \equiv k \pmod{10}$, then the age composition is given by pyramid Δ_k where $\Delta_k = (n(k), n((k - 1) \pmod{10}), \dots, n((k - 14) \pmod{10}))$. The sequence $(n(1), \dots, n(10))$ can better approximate the progressive increase and decrease in livebirths shown in Figure 1. The choice of $(n(1), \dots, n(10))$ which approximates the Great Depression and the Baby Boom generations is shown in Figure 3: during the first 5 periods (20 years) the small cohort enters, with $n(1) + n(2) + n(3) + n(4) + n(5) = 52$, and in the next five periods the large cohort enters, with $n(6) + n(7) + n(8) + n(9) + n(10) = 79$. The cycle then repeats itself.

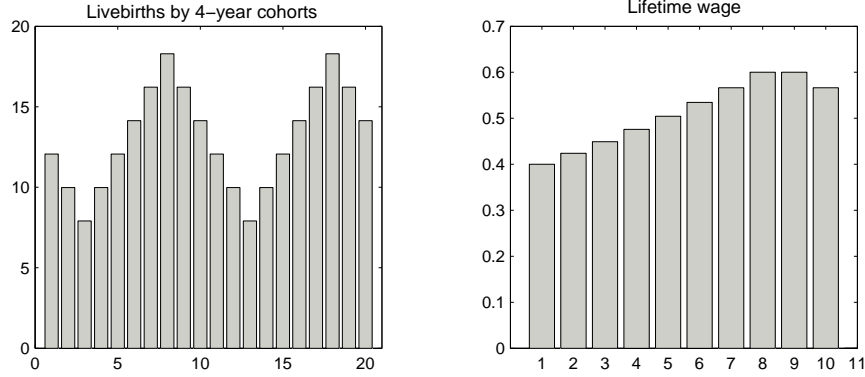


Figure 3: Cohort sizes and wage profile for 4-year intervals

To keep the structure of the economy comparable and consistent with the previous calibration, we assume that the wage schedule increases by regular percentage increases from $w^1 = 2/5$ (wage of the 20-23 cohort) to $w^8 = 1.5w^1$ (wage of the 48-51 cohort), stays the same in the 9th period of life ($w^9 = w^8$) and decreases to $w^{10} = w^7$ in the last period of work. The forty-year work phase ends at age 60 (the agent entered the workplace at age 20) and the agent receives no wage income during the last five periods (20 years) of his life. Figure 3 shows the representative agent's wage income during the work phase (w^1, \dots, w^{10}).

Agents trade the equity contract which pays a constant dividend D each period where D is 19% of the average total wage income over the 10 pyramids ($D = 12.74$). Agents can also borrow and lend at the riskless one-period interest rate r_t , and since the bond and the equity are perfect substitutes, the sequence $(q_t^b)_{t \geq 1}$ with $q_t^b = 1/(1+r_t)$ and the sequence of equity prices $(q_t^e)_{t \geq 1}$ must satisfy

$$\frac{D + q_{t+1}^e}{q_t^e} = 1 + r_t = \frac{1}{q_t^b}$$

As in the three-period case there is a stationary equilibrium $((c_k^i)_{i=1}^{15}, q_k^b, q_k^e)_{k=1}^{10}$ where (q_k^b, q_k^e) are the prices of securities in pyramid Δ_k (with $q_k^b = 1/(1+r_k^{an})^4$) and c_k^i is the consumption of an agent of age i who entered the economy in pyramid Δ_k . $(c_k^i)_{i=1}^{15}$ maximizes $\sum_{i=1}^{15} \delta^{i-1} u(c^i)$ (with $u(c) = c^{1-\alpha}/(1-\alpha)$) subject to the budget constraint (where to simplify $q_k^b = q_k$)

$$c^1 - w^1 + q_k(c^2 - w^2) + \dots + q_k q_{k+1(\text{mod } 10)} \dots q_{k+14(\text{mod } 10)}(c^{15} - w^{15}) = 0 \quad (16)$$

since the sequential budget constraints of an agent trading on financial markets is equivalent to a single budget constraint expressing the equality of the present values of the lifetime wage income

and consumption stream. The equilibrium prices are such that markets clear

$$\sum_{i=1}^{15} \Delta_k^i (c_{k-i+1(\bmod 10)}^i - w^i) = D, \quad k = 1, \dots, 10$$

The equilibrium interest rates and equity prices for the case $\alpha = 4$ are shown in the upper graphs of Figure 4 and are shown as functions of the index k of the population pyramid Δ_k as it runs through 2 cycles ($k = 1, \dots, 20$). The third graph shows a convenient index of the age composition of pyramid Δ_k reflecting the number of middle-aged relative to young agents: we take the MY ratio to be defined by

$$MY(k) = \frac{\Delta_k^6 + \dots + \Delta_k^{10}}{\Delta_k^1 + \dots + \Delta_k^5}, \quad k = 1, \dots, 10$$

i.e. the ratio of the number of agents aged 40-59 to the number of agents aged 20-39.

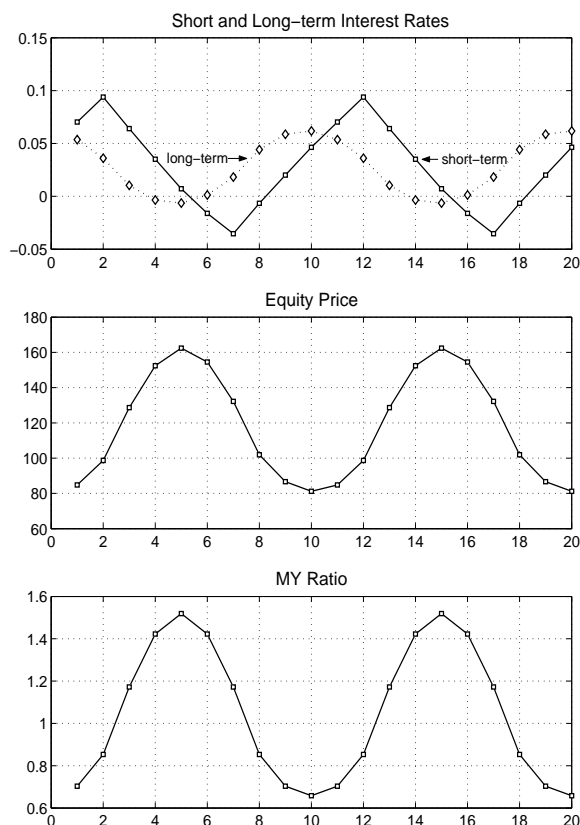


Figure 4: *Short and long-term interest rates, equity price and MY ratio on equilibrium trajectory.*

Although it is convenient for the computation of equilibrium to write the agents' budget constraints in the present-value form (16), to interpret the results in Figure 4 it is easier to consider the

financial trades that agents need to perform to obtain their equilibrium consumption. Since, with no uncertainty only one security is needed, suppose that the agents trade the equity contract to transfer income across the different periods of their life,¹³ the short-term (one-period) interest rate being defined by the rate of return on equity. The sequence of 15 budget constraints over an agent's lifetime can then be written as in (12). The market clearing condition on the equity market is then given by $\sum_{i=1}^{15} \Delta_t^i z_{e,t}^i = 1$ where $z_{e,t}^i$ is the demand for equity of an agent of age i in period t . Equity prices must induce the agents to hold the fixed supply of equity at each date. Although the agents' demand functions for equity are complex since they depend on the current price—which influences agents' wealth and the terms of trade between current and future consumption—and on future prices—which determine the payoff of equity—the equilibrium prices have the behavior that can be intuitively expected. They are high when there is a large cohort of middle aged whose propensity to buy equity to transfer income forward must be rationed. This high demand for equity induced by a large middle-aged cohort is discouraged both by high current prices and by low expected future prices. On the other hand when the middle-aged generation is small, and the large generations are the young and the retired with their smaller demands for equity (the young have lower income and are far from their retirement, while retired agents obtain consumption by disinvesting), the demand for equity is encouraged by low current prices and high expected future prices. It is remarkable that the price of equity is exactly in phase with a simple summary statistic of the age pyramid—the medium-young ratio—despite the fact that agents at the different phases of their youth, middle-age and retirement periods, have different levels of income and different propensities to save.

On the other hand, as shown by Figure 4, in equilibrium the short-term interest rate is out of phase with the cycle of equity prices and the MY ratio. The interest rate, which coincides with the rate of return on equity, is the sum of the dividend yield and the capital gain yield. The dividend yield is inversely proportional to the equity price and thus comoves negatively with it. However the capital gain yield depends on the rate of change of the equity price and, because of the cyclical form of the birth rate, this rate of change is maximal (minimal) in the middle of the ascending (descending) phase of the equity prices: because of these capital gain terms, the turning points in the interest rate occur in the middle of the ascending and descending phases of the equity prices. Short-term interest rates begin to increase before equity prices have bottomed out, and begin to decrease before equity prices have peaked. This synchronous behavior of equity prices and nonsynchronous behavior of rates of return with the MY ratio may help to explain one of the striking empirical findings reported by Poterba (2001): while certain summary demographic

¹³The model 'works' with equity alone but it does not work with the bond alone since the dividends need to enter the economy.

statistics (similar to the MY ratio) correlate relatively well with the level of equity prices, they have essentially no significant correlation with rates of return on equity.

Figure 4 also shows the behavior of the long-term (real) interest rate, defined as the interest rate on the 20-year (5 period) bond, namely the geometric mean of the short-term (real) rates of return 5 periods into the future. The long-term interest rate is in (reverse) phase with the equity prices and the MY ratio. Thus the result of the model with 3-period-lived agents—low interest rates associated with high equity prices and conversely—holds true for the long-term real interest rate, which unfortunately is difficult to obtain from the data. The model also implies a changing term-structure of (real) interest rates with the long-term rate below (above) the short rate on the ascending (descending) phase of equity prices.

4. Introducing Business Cycle Shocks

The abstract entity “land” in our model is a proxy for the long-lived assets that agents can use to transfer income across the different periods of the life cycle: such assets include corporate equity, long-term bonds and real estate. The stock market is a significant part of these assets, but the fluctuation in prices delivered by the demographic model of the preceding section is not of the same order of magnitude as the observed variability of equity prices. If the real S&P 500 is used as an approximate proxy for the level of stock prices, then the trough to peak variations observed over the past 50 years are more than twice those predicted by the demographic model (see Figure 7). However the fluctuation in equity prices over this period coincided not only with fluctuations in the demographic structure, but also with the occurrence of significant aggregate shocks: in the seventies and beginning eighties there were mainly negative shocks—the sequence of oil shocks, the bursts of high inflation followed by restrictive monetary policy, leading to unemployment and low productivity—while the period of the nineties was characterized by aggregate shocks which were mainly positive—low inflation and energy prices, rapid technological progress resulting in low employment and high productivity. We thus add to the demographic model of the previous section the possibility of random shocks to income to study the combined effect for asset prices of demographic and business cycle fluctuations.

Once uncertainty is introduced, equity and the bond cease to be perfect substitutes. Since we are studying a real model which abstracts from inflation risk, the payoff of the one-period bond is riskless; the payoff of equity involves not only a random dividend but also a fluctuating capital value. Thus the equity must earn a risk premium relative to the bond to induce agents to hold it, and the model permits us to study the effect of the changing demographic structure on the risk

premium.

As the certainty model of the previous section has shown, the qualitative results of the simplest model with three-period lived agents, exogenous dividends and no bequest are robust to the introduction of more realistic features. We thus revert to this simplest model, adding the possibility of random wages and dividends, to study the combined effect for asset prices of demographic and business cycle fluctuations.

Risk Structure. We model the risk structure of the economy by assuming that the wages and dividends on equity are subject to shocks. We use a highly simplified structure assuming that at each date there are four possible states of nature (shocks), s_1 =(high wage, high dividend), s_2 =(high wage, low dividend), s_3 =(low wage, high dividend), s_4 =(low wage, low dividend). Given the nature of the risks and the very extended length of time represented by a period (20 years), we have chosen not to invoke a Markov structure, but rather to assume that the shocks are i.i.d. To reflect the fact that aggregate income and dividends are positively correlated we assume that s_1 and s_4 are more likely (probability 0.4 each), than s_2 and s_3 , and this gives rise to a correlation between dividends and wages of 0.6.

Figure 2 shows that the maximum variability of the real annual wage income of the 45-54 cohort is about 4%: in the recession of 1990-91 the mean wage of this cohort went from 65 to 60 (thousands of 1999 dollars), a variability of $(2.5/62.5)=0.04$; the variability of the wage income of the 25-34 cohort is somewhat lower. To take into account the fact that there is permanence in annual shocks and that some periods, like the period 1970-1983, experienced a sequence of negative shocks, in the calibration we increase the coefficient of variation (CV) of the wage income of the middle-aged to 20% and that of the young to 15%. Since the fluctuations of real (generalized) dividends are of the same order as those of wages, we take a CV of 19% for dividends. This leads to a coefficient of variation of about 16% for aggregate income.

Equilibrium. Since the financial markets are incomplete—each date-event is followed by four possible states of nature and agents can trade only two securities (equity and the bond)—the equilibrium cannot be solved (as in the previous section) in terms of the consumption variables with a single present-value budget constraint for each agent. We need to explicitly introduce the asset trades, portfolio optimization, and market clearing asset prices. Let $z_t = (z_t^y, z_{t+1}^m) = (z_{b_t}^y, z_{e_t}^y, z_{b_{t+1}}^m, z_{e_{t+1}}^m)$ denote the lifetime portfolio of an agent born at date t , namely the holdings of the bond and equity $(z_{b_t}^y, z_{e_t}^y)$ in youth, and in middle age $(z_{b_{t+1}}^m, z_{e_{t+1}}^m)$. If $c_t = (c_t^y, c_{t+1}^m, c_{t+2}^r)$ denotes the agent's lifetime consumption in youth, middle age and retirement, then the agent's

consumption is determined by the choice of z_t

$$\begin{aligned}
c_t^y &= w_t^y - q_t z_t^y \\
c_{t+1}^m &= w_{t+1}^m + V_{t+1} z_t^y - q_{t+1} z_{t+1}^m \\
c_{t+2}^r &= V_{t+2} z_{t+1}^m
\end{aligned} \tag{17}$$

where $q_t = (q_t^b, q_t^e)$ denotes the vector of bond and equity prices at date t and $V_{t+1} = [1, D_{t+1} + q_{t+1}^e]$ denotes the payoff of the bond and equity at date $t + 1$. An equilibrium on the bond and equity markets is then a sequence $(z_t, q_t)_{t \geq 0}$ of portfolios and prices such that the representative agent born at date t maximizes lifetime expected utility (1), subject to the budget equations (17), and the bond and equity markets clear at each date $t \geq 0$

$$\begin{cases} Nz_{bt}^y + nz_{bt}^m = 0 \\ Nz_{et}^y + nz_{et}^m = 1 \end{cases} \quad t \text{ odd} \quad \begin{cases} nz_{bt}^y + Nz_{bt}^m = 0 \\ nz_{et}^y + Nz_{et}^m = 1 \end{cases} \quad t \text{ even}$$

Our objective is to study how the alternating cohort sizes of young and medium— (N, n) when t is odd and (n, N) when t is even—influence the equilibrium on the financial markets. In view of alternating cohort structure and the assumption that the wage income and dividends are i.i.d, it is natural to look for a stationary equilibrium of the economy: in the appendix we define such an equilibrium and explain how it can be calculated.

Calibration Results. To study the properties of the equilibrium trajectories, we consider an economy with cohort sizes $(N, n) = (79, 52)$, four possible shocks with probabilities $(.4, .1, .1, .4)$, wage income and dividends across the four states given by $w^y = (2.3, 2.3, 1.7, 1.7)$, $w^m = (3.6, 3.6, 2.4, 2.4)$, $D = (74, 50, 74, 50)$, which yield the CVs of 15%, 20%, 19% mentioned earlier, and agents' preferences characterized by the relative risk aversion parameter $\alpha = 4$. The characteristics of the prices on equilibrium trajectories are shown in Table 4, while the characteristics of the consumption and portfolio strategies are shown in Table 5. A less detailed description is given in the Appendix (Table 10) for an economy with a smaller variation in cohort sizes $(N, n) = (79, 69)$ —calibrated to the sizes of the cohorts born over the periods 1945-1964 and 1965-1984—for three different parameters of risk aversion ($\alpha = 2, 4, 6$).

As explained in the Appendix, in order to find a Markov equilibrium, an endogenous state variable—the portfolio income that the middle-aged bring over from their youth—needs to be added to the exogenous state (k, s) where k is the population pyramid state ($k = 1, 2$) and s is one of the four income shocks. However an interesting feature of the equilibrium trajectories is that

the prices essentially depend only on the exogenous state (k, s) : in Table 4 the standard deviation of prices (the numbers between parentheses) about their means (the numbers without parentheses) are small for all pyramid-shock states (k, s) . Thus the average values of the equity price (q^e) and of the interest rate (r^{an}) in the different states (k, s) give a rather precise description of the prices on the equilibrium trajectories. Table 4 also shows the price-dividend ratio for each state, which we have divided by two to make it comparable with the more familiar price-earnings ratio, commonly used for evaluating the level of prices on the stock market.

A new variable which enters when uncertainty is introduced is the equity premium—namely the amount by which the expected return on equity exceeds the return on bonds. The (annualized) equity premium is calculated on a trajectory as

$$rp^{an} = \text{average}(r_e^{an} - r^{an})$$

where

$$r_{e,t}^{an} = \left(\frac{q_{t+1}^e + D_{t+1}}{q_t^e} \right)^{\frac{1}{20}} - 1$$

is the (annualized) rate of return on equity at date t . This is the only variable in Table 4 which has a high variance even for a given pyramid-shock state (k, s) : this is natural since the realized equity premium is greater than average when a favorable state follows state s , and is lower than average when an unfavorable state follows state s .

As is well known the risk premia predicted by standard rational expectations models are significantly smaller than those obtained *ex post* from the data—at least for the US. Several approaches have been proposed to obtain models with higher risk premia. One is to take into account the fact that agents face individual risks which make their consumption significantly more variable than aggregate consumption. We cannot take into account individual risks without unduly complicating the model and, to compensate, we have been generous in the calibration with the aggregate risk. Other solutions involve entering as constraints some observed deviations of the behavior of agents from that predicted by the model. One prediction of the model is that agents make use of all the available instruments to redistribute income and share risks. However, even though the proportion of US households investing in the stock market has increased significantly over the last fifty years,¹⁴ it still remains less than 50%. To take this into account we solve for the equilibrium under the restriction that 50% of the agents in any cohort do not trade on the equity market and restrict their financial transactions to the bond market (Case B in Tables 4-5).

¹⁴Vissing-Jorgenson (1999) estimates the participation rate in the stock market at around 6% in the early 1950's and around 40 % in 1995.

An alternative approach recently proposed by Constantinides-Donaldson-Mehra (2002) is to impose a borrowing constraint on the young: as shown in Table 5 without such a constraint the young typically borrow and use much of the proceeds to invest in the equity market, to take advantage of the equity premium. As Constantinides-Donaldson-Mehra argue, this is not especially realistic. While young agents can and do borrow significantly to buy houses (which serve as collateral) they do not typically borrow to invest on the stock market. Since “housing” is not explicitly in the model, the simplest way of preventing the young from taking leveraged positions on the equity market is to impose a borrowing constraint. Such a constraint on the young decreases the demand for the risky security and tends to increase the risk premium. However in the simple model that we study, preventing every young agent from borrowing closes the bond market—and the interest rate is not longer well defined. To avoid this, while studying the effect on prices of reducing the demand for equity by the young, we solve for the equilibrium assuming that 90% of the young have borrowing constraints and the remaining 10% are unconstrained (Case C in Tables 4-5).

In addition to the intrinsic interest, and potentially greater realism of these two cases with restricted participation, they are also useful for checking the robustness of the results predicted by the standard model (Case A in Tables 4-5) to different assumptions on market participation.

Cyclical Fluctuations of Security Prices. The general principle which underlies the certainty model—namely that aggregate demand for savings is high in even periods when there is a large middle-aged and a small young cohort (n, N) , while it is low in odd periods where there is a small middle-aged and a large young cohort (N, n) —carries over to the economy with uncertainty. As a result on average the equity price in pyramid Δ_2 is higher than in pyramid Δ_1 . *In an economy with both demographic and business cycle shocks, the stochastic sequence of equilibrium security prices (q_t^e, q_t^b) co-moves with the medium-young cohort ratio, being higher (lower) than average when the MY cohort ratio is high (low).* Thus long-run fluctuations in demographic structure lead to long-run cyclical fluctuations in security prices over time. The order of magnitude of the demographic effect is indicated in Table 4 by the *ratio of the average prices* in the two pyramid states, and this is approximately the same as in the certainty model.

Note that the average interest rate is high in periods $(\Delta_1 \rightarrow \Delta_2)$ where equity prices are rising, and low in periods $(\Delta_2 \rightarrow \Delta_1)$ where the prices are falling, and it is precisely this simultaneous adjustment of interest rates and equity prices which prevents arbitrage opportunities from arising: when equity prices are sure to rise “on average”, the interest rate is sufficiently high to ensure that a strategy of borrowing to buy equity will give rise to a negative payoff in the unfavorable states (3 and 4); when equity prices are expected to fall, short-selling equity and buying bonds with the

Table 1: Prices								
$N = 79, n = 52, \alpha = 4, w^y = (2.3, 2.3, 1.7, 1.7), w^m = (3.6, 3.6, 2.4, 2.4), D = (74, 50, 74, 50)$								
	pyramid 1: MY ratio=0.66				pyramid 2: MY ratio=1.5			
	q^e	$PD/2$	r^{an}	rp^{an}	q^e	$PD/2$	r^{an}	rp^{an}
Case A: Standard Equilibrium								
s_1	103 (3)	14 (.4)	2.1% (.05)	1.1 % (2.8)	292 (27)	39.5 (3.6)	-5% (.19)	.9% (1.65)
s_2	97.5 (2.5)	19.5 (.5)	2.5% (.04)	1.13% (2.8)	250 (22)	50 (4)	-4.3% (.17)	.87% (1.65)
s_3	37 (.9)	5 (.13)	7.9% (.05)	1.14% (3.1)	80 (7)	11 (1)	1.2% (.2)	.96% (1.69)
s_4	34 (.6)	7 (.13)	8.6% (.03)	1.15% (3.1)	61 (5)	12 (1)	2.6% (.2)	.93% (1.74)
<i>Average</i>	68 (34)	10.7 (5)	5.4% (3.1)	1.13% (2.95)	175 (112)	27 (15)	-1.3% (3.7)	.91% (1.69)
<i>ratio of av. prices: 2.6, peak / trough: 8.5, trough / peak 0.12</i>								
Case B: 50% Participation in Equity Market								
s_1	117 (1.7)	15.8 (.23)	.75% (.1)	2.18% (2.5)	297 (35)	40 (4.7)	-5.1% (.55)	1.25% (1.6)
s_2	110 (1)	22 (.2)	1.1% (.06)	1.96% (2.57)	259 (28)	52 (5.5)	-4.5% (.5)	1.16% (1.64)
s_3	43 (0.7)	5.8 (.09)	6.2% (.13)	2.44% (2.73)	93 (10)	12.5 (1.3)	0.3% (.5)	1.4% (1.74)
s_4	40 (.8)	8.1 (.15)	6.7% (.2)	2.5% (2.9)	74.5 (7)	14.9 (1.35)	1.4% (.5)	1.63% (1.8)
<i>Average</i>	79 (37)	12.3 (5)	3.7% (2.9)	2.3% (2.7)	186 (109)	28.7 (15)	-2% (3.2)	1.4% (1.7)
<i>ratio of av. prices: 2.4, peak / trough: 7.3, trough / peak 0.14</i>								
Case C: 90% Young with Borrowing Constraints								
s_1	101 (.4)	13.7 (.06)	2.75% (.03)	1.4% (1.76)	259 (10)	35 (1.3)	-4.5% (.2)	1.12% (1.42)
s_2	101 (.35)	20 (.07)	2.8% (.03)	1.31% (1.76)	240 (8)	48 (1.7)	-4.2% (.2)	1.12% (1.43)
s_3	42.7 (.15)	5.8 (.02)	7.5% (.04)	1.35% (1.85)	125 (5)	16.9 (.7)	-1% (.2)	1.06% (1.48)
s_4	42 (.1)	8.4 (.06)	7.6% (.03)	1.46% (1.88)	110 (3.6)	22 (.7)	-.35% (.16)	1.13% (1.49)
<i>Average</i>	72 (30)	11.4 (4)	5.2% (2.4)	1.41% (1.8)	184 (72)	29.2 (9.2)	-2.5% (2)	1.12% (1.45)
<i>ratio of av. prices: 2.6, peak / trough: 6.1, trough / peak .16</i>								

Table 5: Consumption and Portfolio Strategies

Case A: Standard Equilibrium								
	Pyramid 1 ($r = 5.4, q^e = 68$)				Pyramid 2 ($r = -1.3, q^e = 175$)			
	number	consumption	equity holding	bond holding	number	consumption	equity holding	bond holding
young	N	1.73 (.21)	0.70 (0.33)	-0.44 (0.25)	n	2.41 (0.49)	1.38 (0.94)	-1.78 (1.13)
middle-aged	n	2.02 (0.4)	0.24 (0.14)	0.66 (0.38)	N	2 (0.33)	1.31 (0.8)	1.17 (0.74)
retired	N	1.69 (0.33)	0	0	n	2.31 (0.4)	0	0
Case B: 50% Participation in Equity Market								
	Pyramid 1 ($r = 3.7, q^e = 78.5$)				Pyramid 2 ($r = -2, q^e = 186$)			
constrained young	$.5N$	1.65 (0.21)	0	.35 (0.09)	$0.5n$	2.35 (0.4)	0	-.35 (.14)
unconstrained young	$.5N$	1.82 (.24)	1.50 (0.7)	-1.32 (.6)	$0.5n$	2.44 (0.4)	3.16 (1.6)	-3.6 (1.8)
constrained middle-aged	$.5n$	1.79 (.15)	0	.98 (0.46)	$.5N$	1.69 (0.17)	0	2.06 (0.78)
unconstrained middle-aged	$.5n$	2.24 (0.67)	.71 (0.44)	.49 (0.32)	$.5N$	2.33 (0.78)	2.6 (1.7)	.53 (.49)
constrained retired	$.5N$	1.32 (0.33)	0	0	$.5n$	1.8 (0.11)	0	0
unconstrained retired	$.5N$	2.08 (.7)	0	0	$.5n$	2.82 (1.04)	0	0
Case C: 90% Young with Borrowing Constraints								
	Pyramid 1 ($r = 5.2, q^e = 72$)				Pyramid 2 ($r = -2.5, q^e = 184$)			
constrained young	$.9N$	1.65 (.17)	0.22 (.00)	0	$.9n$	2 (.3)	0	0
unconstrained young	$.1N$	1.7 (.19)	0.79 (.00)	-.61 (.00)	$.1n$	2.49 (.36)	1.59 (.00)	-2.12 (.00)
middle-aged constrained in youth	$.9n$	2.14 (.24)	.39 (.00)	.09 (.00)	$.9N$	1.9 (.15)	1.53 (.00)	.14 (.00)
middle-aged unconstrained in youth	$.1n$	2.18 (.6)	.31 (.00)	.07 (.00)	$.1N$	2.17 (.6)	1.59 (.00)	.14 (.00)
retired constrained in youth	$.9N$	1.66 (.44)	0	0	$.9n$	2.74 (.8)	0	0
retired unconstrained in youth	$.1N$	1.86 (.61)	0	0	$.1n$	2.73 (.9)	0	0

proceeds, gives rise to a negative payoff in the favorable states (1 and 2). Thus there is no way for the agents to profit from the relatively predictable fluctuations in the asset prices.

Since, for a given population structure, an increase in income increases the demand for savings, equity prices covary positively with aggregate income. Thus adding shocks to income opens the possibility of greater variations in equity prices: the greatest increase occurs when the economy moves from (Δ_1, s_4) to (Δ_2, s_1) , namely from a period with a large young cohort and negative income shocks to a period with a large middle-aged cohort and favorable shocks. The ratio of these prices is given on Table 4 by the peak-to-trough ratio (and its inverse the trough to peak ratio).

Equity Premium. The equilibrium risk premium depends on two factors: the risk aversion of the agents and the risk they face. Although these two factors are not independent—an agent’s risk aversion depends on the variability of his consumption stream, which in turn depends on the variability of the return on his investment—it will clarify the discussion to consider the two factors separately. Let us take as a measure of the risk on the equity market the standard deviation of the rate of return on equity. Since, as shown in Table 4, the interest rate is approximately the same each time the equilibrium path passes through a state (k, s) where k is the pyramid state ($k = 1, 2$) and s is the income shock (the standard deviation of the interest rate state by state is small), the standard deviation of the equity premium $\sigma((r_e^{an} - r^{an})|k, s)$ conditional to being in state (k, s) is approximately the same as $\sigma(r_e^{an}|k, s)$. Thus the numbers in Table 4 below the risk premium can be taken as a measure of the risk faced by an agent investing in equity in state (k, s) .

To measure the risk aversion of agents investing in state (k, s) , we use the Sharpe ratio, i.e. the ratio of the mean equity premium to the standard deviation of the rate of return on equity

$$\frac{E(rp^{an}|k, s)}{\sigma(r_e^{an}|k, s)} \simeq \frac{E(rp^{an}|k, s)}{\sigma(rp^{an}|k, s)}$$

An approximate Sharpe ratio can thus be obtained from Table 4 by dividing the mean equity premium in a state (k, s) by its standard deviation. Since the preferences of the agents are not mean-variance, agents can be influenced by higher moments than the variance of the rate of return, but this measure gives a first approximation of the premium per unit of risk that agents need to receive in equilibrium to hold the risky security.

The main characteristic of the risk premium in the equilibria that we compute is that it is higher in pyramid Δ_1 than in pyramid Δ_2 . As we shall see this can not be explained by differences in equilibrium risk aversion: rather it comes from the fact that agents investing in pyramid Δ_1 face a more risky—if more favorable—market than agents investing in pyramid Δ_2 . This in turn comes from the fact that the return $D_{t+1} + Q_{t+1}$ depends more on the capital value term Q_{t+1} when the

price is expected to be high, and more on the dividend D_{t+1} when the price is expected to be low. Since dividends are less variable than capital values (in Table 4 the CV of equity prices is always more than 40% while the CV of dividends is 19%) the return on equity is more variable for agents investing in Δ_1 and expecting high equity prices next period than for those investing in Δ_2 and expecting low prices. This can be seen from the standard deviation of the equity premium in Table 5, which is essentially the same as the standard deviation of the rate of return, and is higher in pyramid Δ_1 than in pyramid Δ_2 .

In contrast to the property that risk, and risk premia, are higher in pyramid Δ_1 than in pyramid Δ_2 , the effect of the changing age composition of the investors on the equilibrium risk aversion is less clear cut, and depends on the assumption made on market participation. At their initial endowment, the risk aversion of young agents is smaller than that of the middle-aged: they have the prospect of income in middle age, while the middle-aged have no income in retirement to help smooth the risk associated with buying a risky security. As a result the young leverage their portfolio on the equity market while the middle-aged diversify between the bond and equity, such strategies serving to equalize the risk aversion of the two types of agents at equilibrium. One might think that the level at which the risk aversion equalizes in equilibrium depends on the relative number of young and middle-aged agents trading with each other, and that the Sharpe ratio, describing the equilibrium risk aversion, should be lower in pyramid Δ_1 where there are many young (N) and few middle-aged (n) agents, than in Δ_2 where the age composition is reversed.

This property is indeed true in the standard case (Case A). As can be easily deduced from Table 5,¹⁵ in pyramid Δ_1 the agents of the large young cohort—the young Boomers—hold on average 82% of the equity while the small cohort of middle-aged “Xers” hold only the remaining 18%, each middle-age Xer investing twice as much of his savings in the bond than in equity. As a result the equilibrium risk aversion as measured by the Sharpe ratio ($\simeq 1.13/2.95 \simeq 0.38$) is low. In pyramid Δ_2 the Boomers, who are now middle-aged, hold 60% of the equity, and equity is a larger share of their savings than for their counterpart in pyramid Δ_1 . As a result the Sharpe ratio is higher ($\simeq .91/1.69 \simeq .53$). The higher average age of equity holders in Δ_2 is associated with a higher risk aversion at equilibrium.

The situation is however reversed in the two cases where the participation on the market is restricted. As can be seen from Table 4, restricting the participation on the equity market to 50%

¹⁵For sake of brevity, we indicate in Table 5 the consumption, equity and bond holding for agents of each age group in a given pyramid state, averaged across the four income states. Since we are in model with rational expectations, a young (middle-aged) agent investing in pyramid 1 anticipates a volatility of consumption equal to the standard deviation indicated in Table 5 for the consumption of a middle-aged (retired) agent of pyramid 2. Thus the standard deviations of consumption in Table 5 help to understand the agents’ risk aversion at equilibrium.

of the agents (Case B) is the most effective way of increasing the risk premium because the risk of the equity is divided among a smaller number of agents¹⁶. Roughly speaking the agents who are trading on the equity market (the unconstrained agents in Table 5) hold twice the amount of equity of their counterpart in Case A, and expose themselves to more than twice the volatility of consumption. As a result the equilibrium risk aversion is higher—the Sharpe ratio is .85 in pyramid Δ_1 and .82 in Δ_2 . Since the risk of equity is of the same order of magnitude, the risk premium is higher. Despite the large number of young investors, the Sharpe ratio increases more in Δ_1 than in Δ_2 , and ends up being higher, because doubling the exposure to risk when the risk is higher has a larger impact on the volatility of consumption than when the risk is lower.

The last case where most young (90%) cannot borrow (Case C), is perhaps more realistic in terms of portfolio behavior—although the borrowing constraint is too extreme since it is not uncommon for a young agent to borrow to buy a house while at the same time investing a fraction of his wage income in equity in a retirement account—but it is less effective at increasing the risk premium than Case B. There are two reasons for this: the first is that the risk of equity decreases—because of the reduced participation of the young on the equity market, the variability of their income impinges less on the market, reducing the variability of equity prices. The second is that this reduced risk is shared among more agents than in Case B: in pyramid Δ_1 the young still hold on average 52% of the equity, the middle-aged 48% so that every agent bears some of the risk; in pyramid Δ_2 , the middle aged hold essentially all the equity (94%), but they are a large cohort. As a result the risk premium is smaller than in Case B.

The way the demographic forces affect the risk premium is thus a little less intuitive than one might have thought. Recognizing that the young are typically less risk averse than the middle-aged, simple intuition would suggest that the risk premium should be lower when the average age of investors on the stock market is lower: such reasoning would predict that the risk premium is lower in pyramid Δ_1 than in Δ_2 , but this is not what happens in equilibrium. In our model the average investor is younger when the market is rising—the prediction of Case C that young agents will enter the market only if attracted by a high rate of return is appealing—but a rising market entails more volatility than a declining market and this greater volatility translates into a higher risk premium, even when the Sharpe ratio is lower as in Case A.

Favored Cohort Effect. As in the model of Section 3, the long-run cyclical fluctuations in

¹⁶This is consistent with the findings of Heaton and Lucas (1999) who explore—in an OLG model with two-period lived agents—the idea of using restricted participation as a way of increasing the equity premium: however in our model participation has a bigger impact on the premium.

Table 6: Lifetime consumption and the favored cohort effect								
$N = 79, n = 52, \alpha = 4, w^y = (2.3, 2.3, 1.7, 1.7), w^m = (3.6, 3.6, 2.4, 2.4), D = (74, 50, 74, 50)$								
Case A: Standard Equilibrium								
	<i>large cohort</i>				<i>small cohort</i>			
	consumption		prices		consumption		prices	
young	17,300 (2,100)	68 (34)	5.4% (3.1)		24,100 (4,900)	175 (112)	-1.3% (3.7)	
middle	20,000 (2,300)	175 (112)	-1.3% (3.7)		20,200 (4,000)	68 (34)	5.4% (3.1)	
retired	16,900 (3,300)	68 (34)	$U = -1$		23,100 (4,000)	175 (112)	$U = -0.6$	
Case B: 50% Participation in Equity Market								
	<i>large cohort</i>				<i>small cohort</i>			
	consumption		prices		consumption		prices	
	constrained	unconstrained			constrained	unconstrained		
young	16,500 (2,100)	18,200 (2,400)	79 (37)	3.7% (2.9)	23,500 (4,000)	24,400 (4,000)	186 (109)	-2% (3.2)
middle-aged	16,900 (1,700)	23,300 (7,800)	186 (109)	-2% (3.2)	17,900 (1,500)	22,400 (6,700)	79 (37)	3.7% (2.9)
retired	13,200 (3,300)	20,800 (7,000)	79 (37)	$U^c = -1.5$ $U^u = -.95$	18,000 (1,100)	28,200 (10,400)	186 (109)	$U^c = -.69$ $U^u = -.56$
Case C: 90% Young with Borrowing Constraints								
	<i>large cohort</i>				<i>small cohort</i>			
	consumption		prices		consumption		prices	
	constrained	unconstrained			constrained	unconstrained		
young	16,500 (1,700)	17,000 (1,900)	72 (30)	5.2% (2.4)	20,000 (3,000)	24,900 (3,600)	184 (72)	-2.5% (2)
middle-aged	19,000 (1500)	21,700 (6,000)	184 (72)	-2.5% (2)	21,400 (2,400)	21,800 (6,000)	72 (30)	5.2% (2.4)
retired	16,600 (4,400)	18,600 (6,100)	72 (30)	$U^c = -1.2$ $U^u = -1.1$	27,400 (8,000)	27,300 (9,000)	184 (72)	$U^c = -.65$ $U^u = -.51$

the demographic structure give rise to a striking property of the equilibrium, dual to the cyclical fluctuations in security prices: *agents in small cohorts receive more favorable equilibrium lifetime consumption streams than agents in large cohorts*. The lifetime equilibrium consumption streams of agents born into the small (respectively, large) cohorts is shown in Table 6—they have been multiplied by 10,000 to make the comparison of the consumption streams more intuitive. Even though all agents begin with the same average lifetime wage income (20,000, 30,000, 0), the average lifetime consumption stream of an agent born into a small cohort is significantly greater than that of an agent in a large cohort. This difference arises from the cyclical fluctuations in the security prices: the two columns to the right of the average consumption stream show the average prices (the equity price and the interest rate) that the corresponding agent faces during his lifetime and the last entry in the interest rate column gives the expected utility (averaged over the possible income shocks when young) of an agent born in a large or small cohort. In the constrained participation cases, U^c and U^u denote the utility of the constrained and unconstrained agents respectively.

In their youth, agents in the small cohort—the Xer’s—can (on average) borrow at a lower interest rate than young agents in the large cohort; furthermore, in their middle age, when they seek to invest for their retirement, the interest rate is high, and (on average) prices on the equity market are sure to rise. Their counterparts in the large cohort—the Baby Boomers—face exactly the opposite conditions. In youth interest rates are high and equity prices are expected to rise—conditions not favorable for borrowing, so Boomers consume less than their income in youth. In middle age not only does the bond market give a miserable return, but equity is expensive to buy and is virtually certain to decline in value when they come to sell in retirement. The alternating cohort sizes create fluctuations in security prices, and agents in small cohorts are always *in phase* with these fluctuations, boosting their consumption streams, while agents in large cohorts are always *out of phase*, thereby shrinking their lifetime consumption¹⁷

Case B in Table 6 shows the loss to their average lifetime consumption stream, incurred by agents who are assumed not to participate on the equity market—as usual the loss incurred by Boomers is greater than that for Xers. While there is a gain in terms of reduced variability of consumption, the loss to average consumption is substantial, especially in middle age and retirement. As a result agents who for whatever reason—by ignorance or by fear—do not participate on the stock market, do so at considerable cost to their lifetime consumption and utility.

The cost of nonparticipation is less marked in Case C where agents face borrowing constraints

¹⁷It can be shown that the extent to which the small cohort is favored depends on the magnitude of the fluctuations in security prices: the greater the difference in the cohort sizes, the greater the degree of relative risk aversion, or the greater the variability of agents’ endowment streams, the greater the fluctuations in security prices, and the greater the extent to which capital markets favor the small cohort.

in youth. Constrained Xers only loose when they are young because they cannot take advantage of the favorable terms for borrowing, while constrained Boomers loose throughout their life, since they cannot exploit the favorable terms for saving in youth, giving them less wealth in middle age and hence less consumption in both middle age and retirement.

Other authors, in particular Easterlin (1987), have pointed out that the Baby Boomers, being a large cohort, face more competition on the labor market and thus should be expected to receive lower wages than the small cohort which preceded them: this labor-market cohort effect, which has been somewhat controversial¹⁸ is absent from our model since we assume that agents have the same lifetime wage profile in both cohorts. Our model shows however that large cohorts face a second curse from the financial markets: by being so numerous they drive the terms of trade against themselves, favoring the small cohort on the other side of the market which follows or precedes them.

5. Comparing Calibration with Observations

The model studied in the previous sections predicts relationships between demographic variables and asset prices. In this section we analyze in a stylized way if the predictions of the model are consistent with data during the last century for the US. The key demographic hypothesis of the model is that the birthrate is cyclical, with a period of 40 years, which is a simplification of the observed birthrate in the US during the 20th century. As we saw in Section 3, leaving aside output shocks, the cyclical birthrate implies that the equilibrium prices and quantities can be expressed as a function of a simple statistic of the population pyramid—the medium-young (MY) ratio. The MY ratio (shown in Figure 6) is taken as the ratio of the size of the cohort 40-49 to the size of the cohort 20-29 for the US population.¹⁹ Note that the use of the MY ratio as a summary statistic of the population pyramid is justified only in the context of an intertemporal equilibrium of an economy with a cyclical birth rate: the MY ratio indicates where in the pyramid cycle the economy is located, but does not imply that the young and the medium cohorts which serve to define the ratio are the only cohorts whose trade influences the equilibrium—all cohorts trade, and all influence the equilibrium outcome.²⁰ The very weak cyclical movement in the MY ratio until

¹⁸Welch (1979) found evidence that wages depend on cohort sizes for the period preceeding 1980: for the period after 1980, as Macunovich (2002) has shown, additional variables are needed to explain the movements in wages.

¹⁹The MY ratio obtained by using the size of the cohort 40-59 to the size of the cohort 20-39 is approximately the same as the ratio we have chosen, with a phase shift (advance) of 4 years. The ratio chosen is slightly better related to the asset price data, but both indices give very similar results. The cohort data is derived from Series A 33-35 in *Historical Statistics of the US* and Bureau of the Census data.

²⁰Empirical studies which have studied the influence of demography on asset markets without an equilibrium model have either considered several summary statistics of the population pyramid (Poterba (2001), Ang and Maddaloni

1945 indicates that there was only a weak cyclical component in the birthrate (and immigration rate) at the end of the 19th and beginning of the 20th century: thus in the period 1910-1945 we should expect a less systematic relation between asset prices and the MY ratio, than during the period 1945-2002.

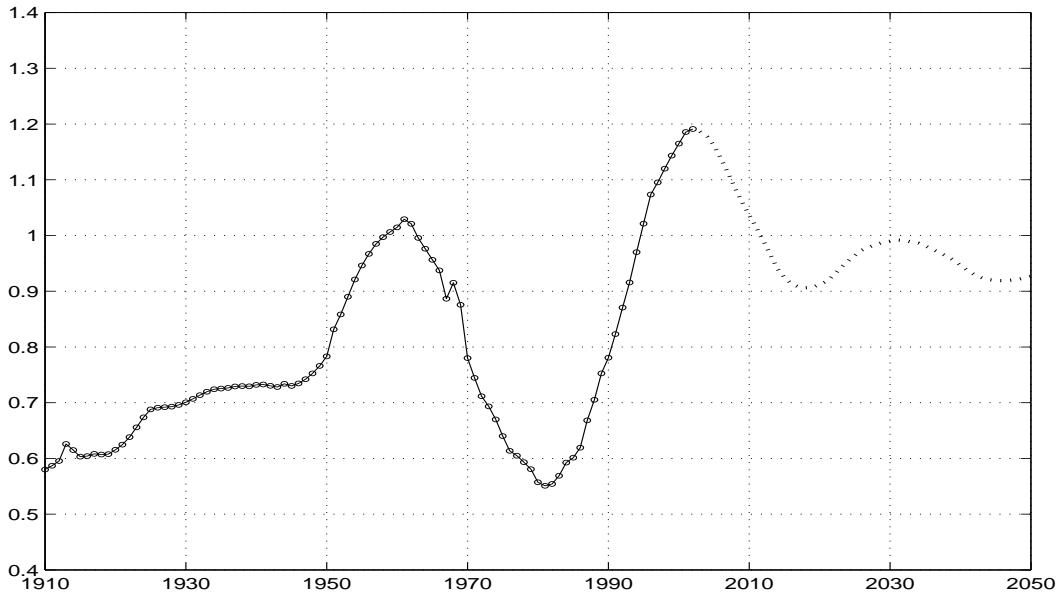


Figure 5: *The middle-young (MY) cohort ratio.*

Equity Prices. Using the real Standard and Poors (S&P) index²¹ expressed in dollars of 2000 as the index of equity prices (see Figure 7), consider in broad outline the joint behavior of the MY ratio and equity prices. Up to the late 1940's there were no significant variations in the MY ratio, and this corresponds roughly with the lack of systematic long-run movement in the S&P index around its trend over this period. To be sure there were ten-year fluctuations in the 30's and 40's, and the ten-year boom of the Roaring 20's, which we think of as shorter run business cycle fluctuations. Starting in the late 40's and continuing all through the 50's and early 60's the ratio of middle-aged to young agents was rising: the middle-aged agents were born at the turn of the century, a period of relatively high birth rates (see Figure 1) and immigration, while the young were the small generation born during the Great Depression. During this same period equity prices were steadily rising. Stock market prices declined in real terms at the end of the 60's and during the 70's, during which the MY cohort ratio also declined significantly: the small Great Depression

(2003)) or the influence of all age cohorts on the financial variables (Poterba(2001), Macunovich (2002)).

²¹We are grateful to Robert Shiller for making the data set for the Standard and Poors index available.

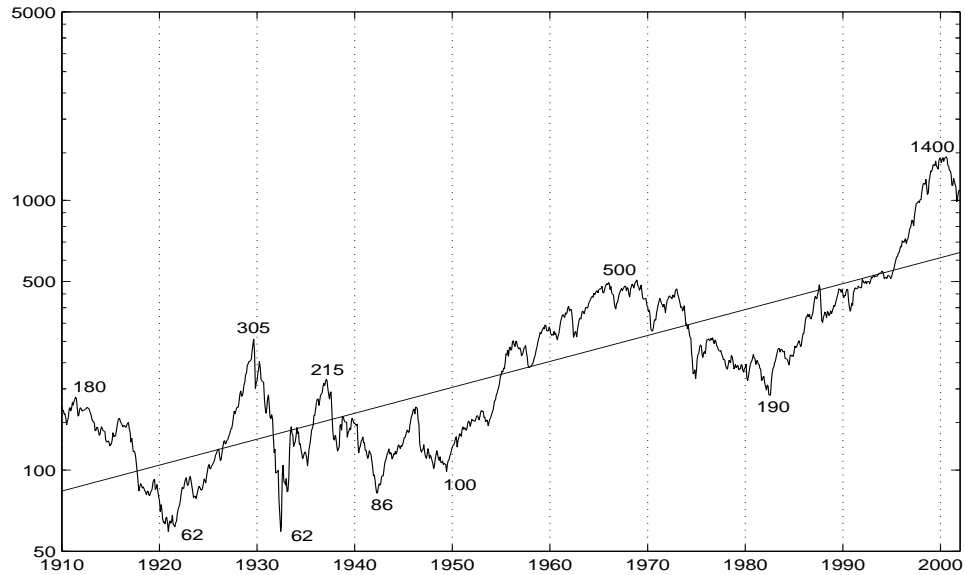


Figure 6: *Real Standard and Poors Index of Common Stock Prices 1910-2002.*

cohort became the middle-aged, while the large cohort of Baby Boomers entered their active life. In the early 80's equity prices began their remarkable ascent to their peak in 2000, and it was during this period that the plentiful Baby Boomers moved into middle-age, while the small cohort of Xers born in the 70's entered their economic life, creating the equally dramatic surge in the MY ratio.

To attempt to capture the demographic changes shown in Figure 6 we have calibrated the model with two demographic structures $(N, n) = (79, 52)$ and $(N, n) = (79, 69)$: the associated equilibrium prices are shown in Table 4 (in the text) and Table 10 in the Appendix. In the first case the MY ratio alternates between $n/N = .66$ in Δ_1 and $N/n = 1.5$ in Δ_2 , in the second case it alternates between $n/N = .87$ and $N/n = 1.14$. It is clear that neither of these by itself exactly captures the movement of the MY ratio after 1950: Table 4 has a high MY ratio of 1.5 which exceeds the high ratios attained in 1965 and 2002 although it well approximates the low ratio attained in 1982. While Table 10 better approximates the high MY ratios in 1965 and 2002, it substantially overestimates the low MY ratio of .55 attained in the early 80's. Thus the predictions of the model should be taken as intervals bounded by the results of the two tables. An additional qualification should also be born in mind: in an economy with growth the decline in equity prices should be less, and the increase greater than that predicted by a model such as ours which factors out growth.

Figure 7 shows the peak and trough values of the real S&P index. Since the 50's and 60's were a period of prosperity, the 70's and early 80's troubled economic times with the successive oil shocks and bursts of inflation, while the late 80's and 90's were a boom period, only interrupted by the

Gulf War recession, the numbers can be compared with the peak and trough values of Tables 4 and 10. Between the peak of 1965 and the trough of 1982, the S&P index lost over 60% of its value in real terms—which is somewhat less than the 80-88% decline predicted by Table 4 and Table 10 with $\alpha = 4$. During the big rise in equity prices from 1982 to 2000, the real S&P index increased by a factor of 7.4, which accords well with the peak to trough ratios between 6.2 and 8.5 of Table 4, but is more than the peak to trough ratio 5.2 of the case $\alpha = 4$ of Table 10.

The price-earnings ratio is a normalized measure of level of equity prices which has the advantage of factoring out growth and is thus more directly comparable with the results of our model. As Figure 8 shows²², the PE ratio follows roughly the same pattern as the real S&P index and corresponds well with the long-run fluctuations in the MY cohort ratio. The PE ratio increases from a low of 8 to around 20 in the 60's, decreases in the seventies and early 80's to around 8, after which it increases to around 30 in 2000. These numbers correspond well with the predictions of Tables 4 and 10 (with $\alpha = 4$) with PE ratios (or half price-dividend ratios in the tables) varying between 7-8 in the bad state s_4 of pyramid Δ_1 and 25-40 in the good state s_1 of Δ_2 .

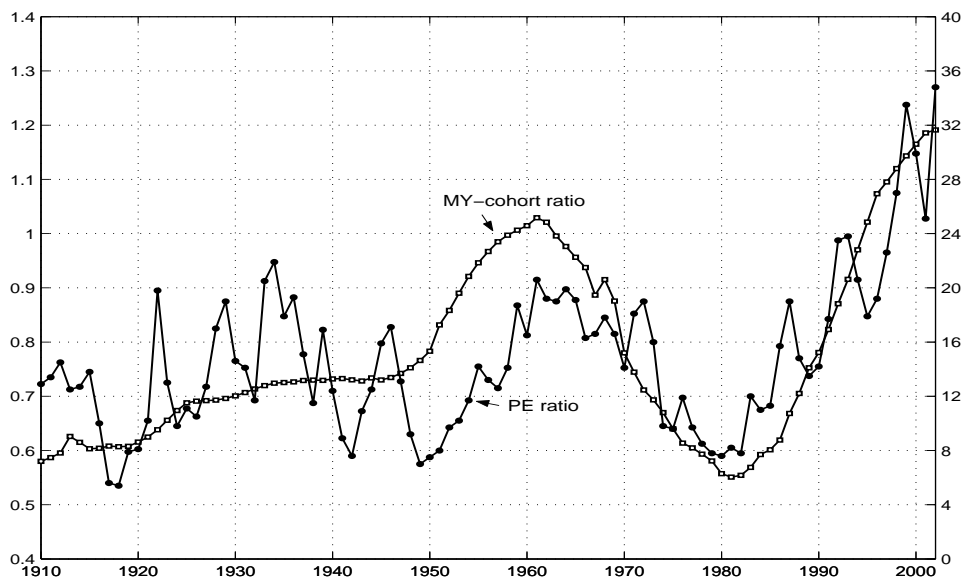


Figure 7: *S&P price-earnings ratio and MY cohort ratio.*

Table 7 shows the results of the regression of the PE ratio on the MY-cohort ratio

$$PE_t = c + \beta MY_t + \epsilon_t$$

²²The PE ratio that we consider is obtained by dividing the S&P price index of each month by an average of the earnings of the past 12 months and annualizing the series.

Table 7: Regression of PE Ratio on MY Ratio											
1910-2002				1945-2002				1965-2002			
c	β	R^2	ADF t-stat	c	β	R^2	ADF t-stat	c	β	R^2	ADF t-stat
-3.5 (3.2)	23.5 (4.4)	0.48	-4.1	-5.5 (3.7)	25.4 (4.7)	0.55	-2.8	-7.1 (2.6)	29.7 (3.3)	0.78	-4.8

for different time periods. The standard errors, corrected for heteroskedasticity and autocorrelation (Newey-West (1987)) are indicated in parentheses below the coefficients. Since the series are slow moving and there is a danger of finding spurious correlations, we report the t-statistics of the Augmented Dickey-Fuller unit root test on the residuals of the regression²³. The regression tends to support the assumption of a systematic relation between the PE ratio and the MY ratio: the regression coefficients are significant, stable, and the probability of a unit root in the residuals is low on the largest sample 1910-2002. These results are consistent with the results of Poterba (2001, Table 9) who finds a significant relation between the price-dividend ratio and demographic variables.

Rates of Return. A defect of the stochastic model with 20 year time periods is that it cannot give insight into short-run rates of return. We were able to study short-run rates of return only in the deterministic model in which the rate of return on equity coincides with the interest rate. There we found that the rate of return (and hence the interest rate) is not synchronized with the MY ratio because it is importantly influenced by the capital gains or losses which depend on the change in the equity price, and hence on the change (and not the level) of the MY ratio. This suggests studying how annual interest rates and rates of return on equity covary with the differenced MY ratio. The result of the regression

$$X_t = c + \beta D(MY)_t + \epsilon_t$$

is shown in Table 8 for different time periods, where X_t is either the rate of return on the S&P or the real short-term interest rate, and $D(MY)_t = MY_t - MY_{t-1}$. The Newey-West standard errors are shown in parentheses below the coefficients.

²³All the ADF t-statistics of residuals reported in this section are derived from the regression of the differenced residual on the residual without a constant and with one lagged variable. A critical value smaller than -3.39 leads to a rejection of the null hypothesis of a unit root in the residuals at the 1% confidence level. The critical levels for the 2.5% and 5% confidence levels are -3.05 and -2.76 respectively (Phillips-Ouliaris (1990)).

The results for the rate of return on equity are as expected: the rate of return on equity is much more variable than the change in the MY ratio and is clearly affected by other shocks (to output). Nevertheless demographic changes account for 14% of the variability of the rate of return between 1945 and 2002, which is non-negligible. Figure 9 shows the relationship: there is a tendency for rates of return to be higher in the late 40's and 50's, and in the mid 80's and 90's when the MY ratio was increasing, and lower than average in the late 60's and 70's when the MY ratio was decreasing.

Table 8: Regression of Rate of Returns on Differenced MY Ratio						
	Real Rate of Return on S&P			Real Short-Term Interest Rate		
	c	β	R^2	c	β	R^2
1910-2002	6.73 (1.9)	206 (43)	0.07	0.76 (0.7)	20.23 (12.8)	0.01
1945-2002	7.42 (1.6)	197 (41)	0.14	0.53 (0.6)	12.6 (11.4)	0.02
1965-2002	5.9 (2)	186 (40)	0.16	1.28 (0.5)	22.8 (10.6)	0.16

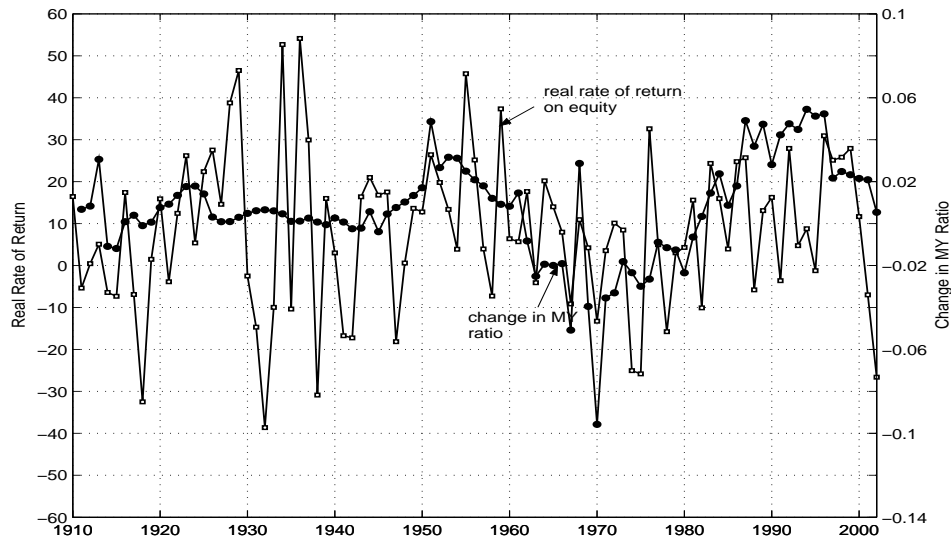


Figure 8: *Real rate of return on S&P index and change in MY ratio.*

On the other hand the relation between the short-term interest rate and the change in the MY

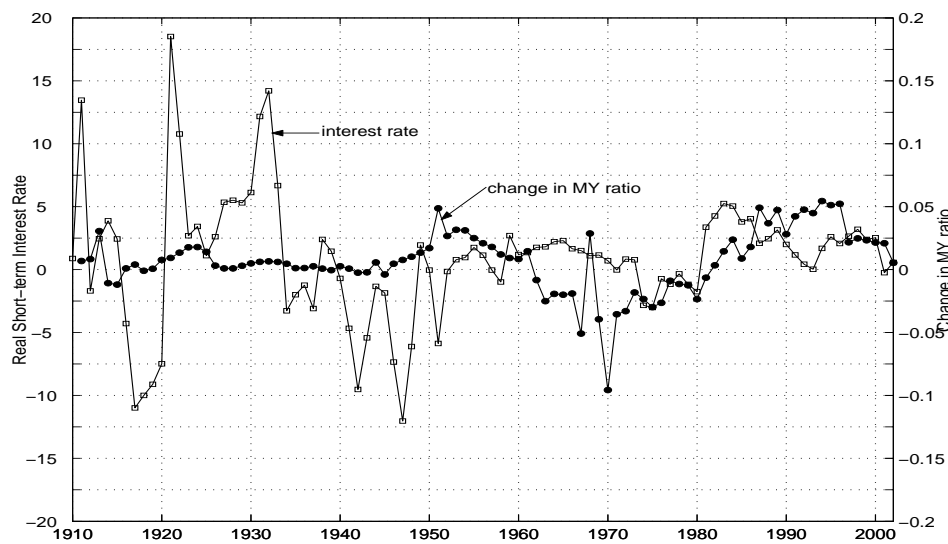


Figure 9: *Real short-term interest rate and change in MY ratio.*

ratio is weaker than expected during the period 1945-2002. The regression has to be restricted to the period 1965-2002 to obtain a significant relation between the interest rate and the differenced MY ratio: indeed as shown by Figure 10 during this period²⁴ the behavior of the interest rate is roughly compatible with the equilibrium behavior shown in Figure 4: real interest rates declined after 1965 and were very low in the mid seventies when the MY ratio and real equity prices were declining rapidly. The turn in interest rates occurred in 1980, before the turn in equity prices, and interest rates were high in the early 80's at the beginning of the rise in stock prices. They stayed relatively high up to 2000, with a small intermission before and during the fall in equity prices accompanying the Gulf War recession. The period 1945-1965 does not however fit the predictions of the model: the return on equity was consistently high during the bull market of the 1950's and early 1960's while the interest rate was low, especially at the beginning of the rise in the late 1940's and early 1950's: this is difficult to reconcile with rational expectations. One hypothesis is that many investors, scared by the enormous losses incurred on the stock market during the Great Depression, fled to the relative safety of the bond market, leading to a period of low interest rates. As we have seen, restricted participation in the equity market decreases interest rates.

Equity Premium. In the different equilibria that we calculated, interest rates were in the interval

²⁴The series shown in Figure 10 is obtained by pasting the three-month Treasury Bill rate for the period 1939-2002 (Economic Report of the President) with the short-term commercial paper rate (Historical Statistics) for the period 1910-1938, decreased by 0.55%, which is the average premium on the commercial paper for the period when the two series are available.

[-5%, 9%]. Although, as seen from Figure 10, this interval is not exceptional by historical standards—prior to the fifties the real interest rate fluctuated between -12% and 18%—the fluctuation in interest rates in the postwar period, in which the significant demographic changes occurred, have been smaller—between -3% and 5%—in part because the change of regime from a gold standard to fiat money has increased the effectiveness of monetary policy which was aimed at reducing the variability of inflation and stabilizing real interest rates.

The smaller than predicted adjustment of interest rates to movements of equity prices implies that the high values of the risk premium are much higher than that predicted by the model. The equity premium in Figure 11 is calculated by taking the geometric mean rate of return on the S&P twenty years forward at each date, and subtracting the geometric mean of the short-term interest rate over the same period; this gives the average equity premium that agents could expect if they invested at this date with perfect foresight. The maximum occurred in the early to mid 1940's reflecting the fact that the excess return on equity was high during the twenty years of the rising market from 1945 to 1965. The minimum occurred around 1965, which means that the premium was low during the declining market of the 1970's and early 1980's. Then there is a local maximum in 1980 arising from the high rate of return on equity from the beginning 1980's up to 2000.²⁵

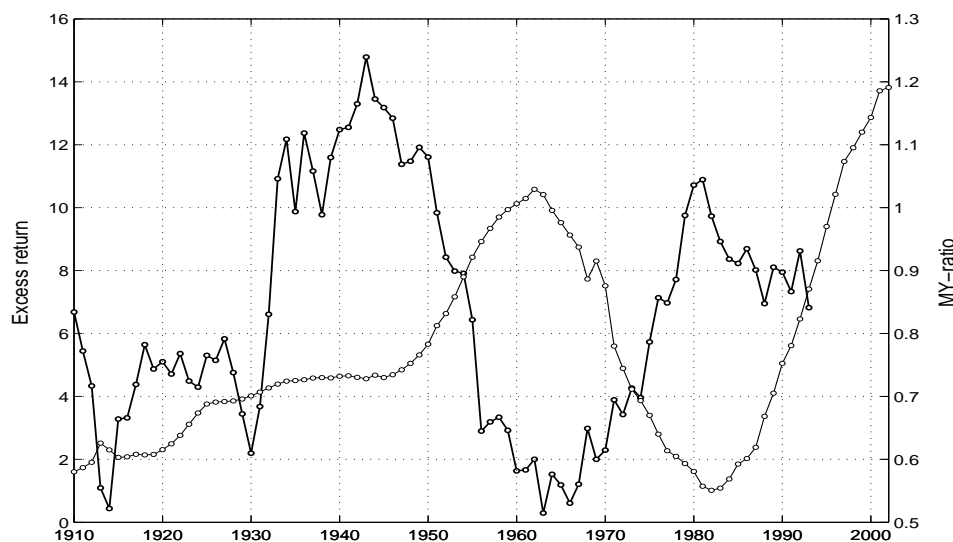


Figure 10: *Equity premium on S&P index and MY ratio.*

The qualitative behavior of the equity premium fits the predictions of the model well: in equilibrium the excess return is higher on average for the agents who buy at low prices (when the MY

²⁵The series is continued after 1983 which is the last year for which 20 observations forward are available, up to 1993 by taking the forward geometric means over the available observations.

ratio is low) than for those who buy at high equity prices and expect a low return (when the MY ratio is high). The equilibrium results on the equity premium are driven by the fact that returns are more variable when prices go up than when they go down. This is only partially supported by the data: with yearly data there is no marked change in variability of the S&P index between ascending and descending phases²⁶. However at the higher frequency of daily data, the market has been substantially riskier in the recent ascending phase (1982-2000) than in the preceding declining phase (1965-1982): for these periods the standard deviation of the daily rate of change in the price index went from 0.83% to 1.1%, and the number of days with more than 2% change in prices went from 121 to 207. The bull market of the fifties on the other hand did not exhibit more volatility than the ensuing bear market of the seventies.

Note that, given the small variability of the short-term interest rate, the behavior of the average (geometric) excess return 20 years forward, is close to that of the average (geometric) rate of return 20 years forward. This long-term rate of return on equity thus exhibits a cyclical behavior with a 20-year phase shift from the MY ratio, which roughly fits the prediction of the deterministic and stochastic models.

International Evidence. The three alternating twenty-year episodes of increasing and decreasing equity prices in the US constitute a rather small sample for checking whether demographic forces were a significant causal element in these price changes. The experience of countries other than the US may help to increase the number of observations for testing the demographic hypothesis. This section studies whether there is a relation between equity prices and demography for Germany, France, UK and Japan.

The model that led to the tests for the US rests on two assumptions—a cyclical livebirth process and a closed economy—which may not be appropriate for other countries. The cyclical livebirth process comes directly from the observation of the US livebirth process, and justifies taking the MY ratio as a proxy for the composition of the population. Since the livebirths of the other countries mentioned above are less clearly cyclical, we study two proxies for the composition of the population, the MY ratio defined as for the US and the size of the cohort 35-59, which is a direct measure of the middle-aged group.

The assumption of a closed economy has been made to explain the asset prices in the US by

²⁶If we compute for each year the standard deviation of the rate of return on the S&P during the following twenty years, the most obvious result is that, because of the Great Depression, the volatility of the rate of returns experienced by the investors at the beginning of the century was much larger than the volatility experienced after the Second World War. For example the standard deviation of the twenty-year-forward rate of return was between 24% and 28% from 1914 to 1932, while it has varied between 13% and 17% after 1940.

its own demographic structure. This assumption seems reasonable for studying the past, if not the future, behavior of the US stock market, since until recently US equity has been largely owned by US investors: up to 1975 foreigners held less than 4% of US equity, and despite the increase during the 80's foreigners still hold less than 11%²⁷. The home bias phenomenon has been documented for other countries, but the closed economy assumption may nevertheless be more appropriate for the US and Japan which have the two largest stock markets in the world, than for the smaller European markets which seem to follow the US market.

Table 9: Regression of Real Price Index on Demographic Variable 1950-2001								
	MY ratio				Cohort 35-59			
	c	β	R^2	ADF t-stat	c	β	R^2	ADF t-stat
Germany: Real CDAX	89 (75)	65 (80)	0.01	-1.03	-671 (109)	0.033 (0.004)	0.53	-2.47
France: Real SBF	-2200 (706)	3958 (810)	0.32	-2.86	-2400 (669)	0.23 (0.04)	0.37	-0.84
U.K: Real FTS	349 (695)	1087 (747)	0.04	-0.77	-8600 (894)	0.57 (0.05)	0.72	-3.14
Japan: Real Nikkei 225	-16481 (2656)	33555 (3116)	0.70	-3.3	-14493 (1880)	0.75 (0.08)	0.63	-2.86

Table 9 presents the results of the regression

$$RP_t = c + \beta D_t + \epsilon_t$$

where RP_t is the real stock price index of the country considered²⁸ and D_t is the demographic index: in the first block D_t is the MY ratio for the cohorts 40-49 to 20-29, while in the second block D_t is the size of the cohort 35-59. The regression is limited to the period 1950-2001 since the population data comes from the United Nations²⁹ data which is available only since 1950.

The results are mixed: Germany shows little sign of a relation between equity prices and demography—the R^2 is small and the ADF t-statistic does not support cointegration. For France the real SBF index has a relatively significant relation with the MY ratio, but no convincing relation with the 35-59 cohort, and conversely the UK real FTS index has no relation with the MY ratio, but a relatively strong relation with the 35-59 cohort. All the results improve significantly when

²⁷Flow of Funds Accounts of the US, 1945-2002, Board of Governors of the Federal Reserve System.

²⁸Source: Global Financial Data.

²⁹World Population Prospects: The 2000 Revision, United Nations, Population Division, February 2001.

the regression is restricted to 1980-2001: each of the European countries had a baby boom after 1945, giving rise to a large and growing middle-age cohort from 1980-2001, and each, like the US, experienced a stock market boom over this period.

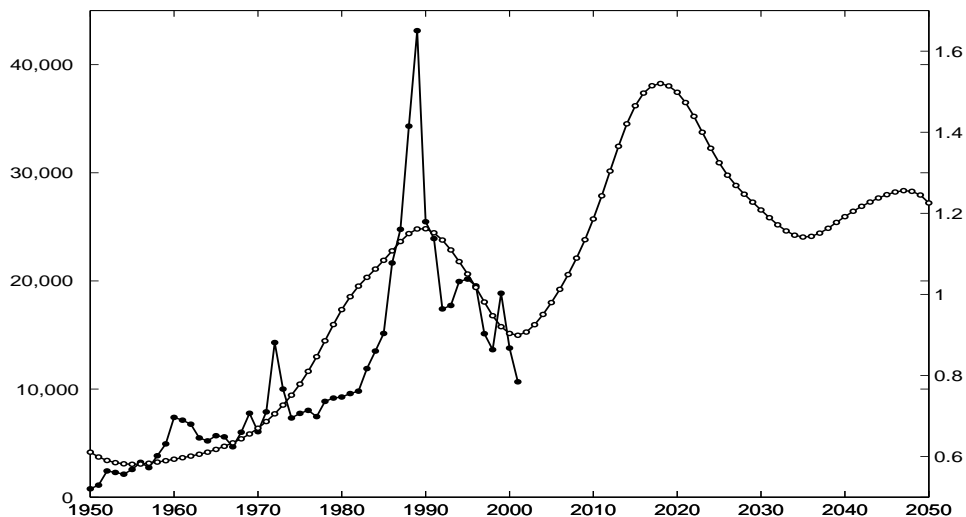


Figure 11: *Japan Nikkei 225 real price index and MY ratio.*

The most convincing evidence for the demographic hypothesis is provided by Japan. The Japanese market does not seem to follow the US market: it increased in the mid 60's and 70's, and decreased during the 90's when the the US market was booming. The livebirth process has some of the cyclical aspects of the US, but with different dates for the peaks and troughs. Figure 12 shows the Nikkei price index and the MY ratio. It seems remarkable that the turning point of the Nikkei index has coincided almost exactly with the turning point of the medium-young ratio.

6. Concluding Remarks

The model studied in this paper has combined a demographic structure tailored to the demographic experience of the US during the last century with a life-cycle behavior of the representative agent for each generation. The calculation of equilibrium shows that fluctuating cohort sizes induce substantial changes in equity prices, resulting in the predictability of the rate of return on equity: high price-earnings ratios are followed on average by low rates of return and conversely. The changes in equity prices are accompanied by changes in rates of return and interest rates which are linked to the change, rather than the level, of the MY ratio. The equilibrium also exhibits some predictability of excess returns. When compared to data, the model does not do too badly on

equity prices and on rates of return on the stock market. However the predictions on interest rates and excess returns are less satisfactory. On the whole the fact that the turning points of stock prices and price-earning ratios are well synchronized with the demographic cycle as measured by the medium-young ratio seems to go in favor of the demographic hypothesis.

Contrary to the conclusion of Poterba (2001), given the predicted future behavior of the MY ratio (Figure 6) our model predicts a decline in the PE ratio in the US equity market over the next twenty years: this conclusion is similar to that of Campbell-Shiller (2001) based on the historical mean reversion of the PE ratio process. The predictions of our model should however be interpreted with caution in view of the ongoing globalization of equity markets. This study has been based on national (mainly US) data for equity markets and demography, which is justified by the strong and well-documented “home bias” toward national equity issues (French and Poterba (1991), Tesar and Werner (1995)). However a model placed directly in an international setting predicts that agents diversify across the equity issues of other countries. This discrepancy between theory and observation tends to disappear with the decrease in transactions and informational costs, and the development of financial markets³⁰, so that the future evolution of US equity prices may well depend more on the joint demography of the countries with participation in the US equity market than on the US demography. Most developed countries have similar demographic perspectives for the next thirty years, with a Baby Boom generation going into retirement, low birthrates, and lengthening of life expectancy, all factors leading a high dependency ratio (ratio of retired to working agents). The only real prospect for offsetting the effect of a small generation of middle-aged agents buying the equity of a large retired generation, comes from an increased participation in the US security market by investors from the developing countries .

³⁰Recent papers have documented an important decrease in the home bias: see Lane and Milesi-Ferretti (2003) and Ahmadi (2003).

References

- Abel, A.B. (2001), "Will Bequests Attenuate The Predicted Meltdown in Stock Prices When Baby Boomers Retire?" *Review of Economics and Statistics*, 83, 589-595.
- Abel, A.B. (2003), "The Effects of a Baby Boom on Stock Prices and Capital Accumulation in the Presence of Social Security", *Econometrica*, 71, 551-578.
- Ahmadi, A. (2003), "Equity Home Bias: A Disappearing Phenomenon?", mimeo, UC Davis.
- Ang, A. and A. Maddaloni (2003), "Do Demographic Changes Affect Risk Premiums? Evidence from International Data", forthcoming *Journal of Business*.
- Bakshi, G.S. and Z. Chen (1994), "Baby Boom, Population Aging and Capital Markets", *Journal of Business*, 67, 165-202.
- Basu, P. (1987), "An Adjustment Cost Model of Asset Pricing", *International Economic Review*, 28, 609-621.
- Brooks, R. (2002) "Asset Markets Effects of the Baby Boom and Social Security Reform," *American Economic Review, Papers and Proceedings*, 92, 402-406.
- Brown, S.W.J., Goetzmann, W.N., and S.A. Ross (1995), "Survival", *Journal of Finance*, 50, 853-873.
- Campbell, J and R.J. Shiller (2001), "Valuation Ratios and the Long-Run Stock Market Outlook: An Update", NBER Working Paper 8221.
- Constantinides, G.M., Donaldson J.B. and R. Mehra (2002) "Junior Can't Borrow: A New Perspective on the Equity Premium Puzzle", *Quarterly Journal of Economics*, 117, 269-296.
- Easterlin, R.A. (1987), *Birth and Fortune*, University of Chicago Press.
- Fisher I. (1929), "Address to District of Columbia Bankers Association", transcript in *The Works of Irving Fisher, Volume 10*, 3-24, W.J. Barber and J. Tobin eds, , London: Pickering & Chatto (1997).
- French, K. and J. Poterba (1991), "Investor Diversification and International Equity Markets," *American Economic Review, Papers and Proceedings*, 81, 222-226.
- Hall, R.E. (2000), "E-Capital: The Link between the Stock Market and the Labor Market in the 1990's," *Brookings Papers on Economic Activity*, 73-118.
- Heaton, J. and D. Lucas (1999), "Stock Prices and Fundamentals," in B.S. Bernanke and J.J. Rotemberg, eds., *NBER Macroeconomic Annual*, 213-241.
- Lane, P.R. and G.M. Milesi-Ferretti (2003), "International Financial Integration," CEPR Discussion Paper, No. 3769

- Macunovich, D.J. (2002), *Birth Quake*, Chicago University Press.
- Malkiel, B. G. (1990), *A Random Walk Down Wall Street*, Fifth Edition, New-York: Norton.
- McGrattan, E.R. and E.C. Prescott (2001), "Is the Stock Market Overvalued," *Federal Reserve Bank of Minneapolis Quarterly Review*, 24, 20-40.
- Mehra, R. and E.C. Prescott (1985), "The Equity Premium: A Puzzle," *Journal of Monetary Economics*, 15, 145-161.
- Modigliani, F (1986), "Life Cycle, Individual Thrift, and the Wealth of Nations," *American Economic Review*, 76, 297-313.
- Modigliani, F. (1988), "The Role of Intergenerational Transfers and Life Cycle Saving in the Accumulation of Wealth," *Journal of Economic Perspectives*, 2, 15-40.
- Modigliani, F. and R.A Cohn (1979), "Inflation, Rational Valuation and the Market", *Financial Analysts Journal*, 24-44.
- Newey, W. and K. West (1987), "A Simple Positive Definite, Heteroskedasticity and Autocorrelation Consistent Covariance Matrix," *Econometrica*, 55, 703-708.
- Phillips, P.C.B. and S. Ouliaris (1990), "Asymptotic Properties of Residual Based Tests for Cointegration," *Econometrica*, 58, 165-193.
- Poterba, J.M. (2001), "Demographic Structure and Asset Returns," *Review of Economics and Statistics*, 83, 565-584.
- Shiller, R.J. (2000), *Irrational Exuberance*, Princeton University Press.
- Siegel, J. (1994), *Stocks for the Long Term*, New York: R.D. Irwin.
- Tesar, L. L. and I. M. Werner (1995), "Home Bias and High Turnover," *Journal International Money and Finance*, 14 , 467-492.
- Vissing-Jorgenson, A. (1999), "Comment" (on Heaton and Lucas's paper), in B.S. Bernanke and J.J. Rotemberg, eds., *NBER Macroeconomic Annual*, 242-253.
- Welch, F. (1979), "The Effects of Cohort Size on Earnings: the Baby Boom Babies' Financial Bust," *Journal of Political Economy*, 87, S65-S97.

Appendix

Appendix A: Correcting for Immigration. Annual data for immigration can be obtained from the Historical Statistics of the US and from the Statistical Yearbook of the Immigration and Naturalization Service (INS), which has become the US Citizenship and Immigration Service (USCIS). From this data we find that the number of immigrants was approximately 2.4 million for the period 1925-1944, 4.5 million for the period 1945-1964, 8.8 million for the period 1965-1984 and 16.8 million for the period 1985-2004. The USCIS statistics indicate that between 1994 and 1996 on average 21% of the immigrants were below age 15, 33.3% were in the age group 15-29, 26.3% were in the age group 30-44, 14.7 in the age group 45-64, and 4.7% were over 65 years old. These age groups do not correspond exactly to the age cohorts that we consider; we estimate at 25% the number of immigrants below age 20, 50% the number in the age group 20-39, 20% in the age group 40-59 and 5% over 60. We use the formulae

$$Y_t = LB_{t-1} + C_{t-1}^{im} + Y_t^{im}, \quad M_t = Y_{t-1} + M_t^{im}$$

to correct the size of the cohorts, where Y_t, M_t denote the number of young and middle-aged at period t , LB_t the number of liverbirth, and $C_t^{im}, Y_t^{im}, M_t^{im}$ the number of children, young and middle-aged immigrants.

The immigration-adjusted number of young (Baby-Boomers) and middle-aged (Depression Generation) for the period 1965-1984 becomes

$$Y_{65-84} = 79 + 0.25 \times 4.6 + 0.5 \times 8.8 = 85, \quad M_{65-84} = 52 + 0.25 \times 2.4 + 0.5 \times 4.6 + 0.2 \times 8.8 = 57$$

with a ratio $85/57=0.67$ instead of the ratio $79/52=0.66$ adopted in the paper. Similarly for the period 1985-2004, the corrected number of young (Xers) is $Y_{85-04} = 79.6$ and the corrected number of middle-aged (Baby-Boomers) is $M_{85-04} = 88.4$, leading to a ratio $88.4/79.6=1.11$ instead of the ratio $79/69=1.14$ adopted in the paper.

Appendix B: Recursive Equilibrium. Since agents' (economic) lives span 3 periods, it can be shown that a Markov equilibrium which depends on the exogenous states—the pyramid and shock states—does not exist. What is needed is an endogenous variable which summarizes the dependence of the equilibrium on the past—the income which the middle-aged agents inherit from their portfolio decision in their youth. Thus we study equilibria with a state space $\Xi = G \times K \times S$ where G is a compact subset of \mathbb{R}_+ , $K = \{1, 2\}$ is the set of pyramid states (indexed by $k \in \{1, 2\}$) and $S = \{s_1, s_2, s_3, s_4\}$ is the set of shock states: we let $\xi = (\gamma, k, s)$ denote a typical element

of the state space Ξ , γ denoting the portfolio income inherited by the middle-aged agents from their youth. The pyramid state k determines the age pyramid $\Delta_k = (\Delta_k^y, \Delta_k^m, \Delta_k^r)$. If k is the population state at date t , let k^+ (resp. k^-) denote the pyramid state at date $t+1$ (resp. $t-1$). Since the pyramid states alternate, if $k=1$ then $k^+ = k^- = 2$. The output shock $s \in S$ determines the incomes $w^y = (w_s^y, s \in S)$ and $w^m = (w_s^m, s \in S)$ of the young and middle-aged agents, as well as the dividend $D = (D_s, s \in S)$ on the equity contract.

To find a Markov equilibrium, we note that the security prices only need to make the portfolio trades of the young and middle-aged agents compatible: the retired agents have no portfolio decision to make—they collect the dividends and sell their equity holdings. Thus we are led to study the portfolio problems of the young and the middle-aged agents, the latter inheriting the income γ , and to look for security prices which clear the markets. This problem can be reduced to the study of a family of two-period portfolio problems in which middle-aged agents anticipate the consequences of their decisions for their retirement—they need to anticipate the next period equity price Q^e —and young agents anticipate the portfolio income they will transfer into middle age (which also depends on Q^e) and the saving decision F that they will make next period to provide income for their retirement. A correct expectations equilibrium then has the property that the agents' expectations are fulfilled in the next period. Given that an equilibrium involves both current and anticipated variables we introduce the convention that current variables are denoted by lower case letters, while anticipated variables are denoted by capitals. A stationary Markov equilibrium will be a function $\Phi : \Xi \rightarrow \mathbb{R}^4 \times \mathbb{R}_+^2 \times \mathbb{R}_+^8$ with $\Phi = (z, q, Q^e, F)$, where $z = (z^y, z^m) = (z_b^y, z_e^y, z_b^m, z_e^m)$ is the vector of bond and equity holdings of the young and middle-aged agents respectively, $q = (q^b, q^e)$ is the vector of *current* prices for bond and equity, $Q^e = (Q_s^e, s \in S)$ is the vector of *anticipated* next period equity prices and $F = (F_s, s \in S)$ is the vector of *anticipated* next period savings of the young. To express the condition on correct expectations we need the following notation: if in state ξ young agents choose a portfolio $z^y(\xi)$ and anticipate equity prices $Q^e(\xi)$, then the income $\Gamma(\xi) = (\Gamma_s(\xi), s \in S)$ which they *anticipate* transferring into middle age is given by

$$\Gamma(\xi) = V(\xi)z^y(\xi), \quad \xi \in \Xi$$

where $V(\xi) = (\mathbf{1}, D + Q^e(\xi))$, $\mathbf{1} = (1, \dots, 1) \in \mathbb{R}^4$ denoting the sure payoff on the bond and $D = (D_s, s \in S)$ the random dividend on equity. We let $f(\xi)$ denote the actual savings chosen by middle-aged agents when the state is ξ , thus

$$f(\xi) = q(\xi)z^m(\xi), \quad \xi \in \Xi$$

Definition. A function $\Phi = (z, q, Q^e, F) : \Xi \rightarrow \mathbb{R}^4 \times \mathbb{R}_+^2 \times \mathbb{R}_+^8$ is a *stationary (Markov) equilibrium*

of the economy $\mathcal{E}(u, w, D, \Delta)$ if, $\forall \xi = (\gamma, k, s) \in \Xi$,

$$\begin{aligned}
\text{(i)} \quad & z^y(\xi) = \arg \max_{z^y \in \mathbb{R}^2} \left\{ u(c^y) + \delta \sum_{s' \in S} \rho_{s'} u(C_{s'}^m) \left| \begin{array}{l} c^y = w_s^y - q(\xi)z^y \\ C^m = w^m + V(\xi)z^y - F(\xi) \end{array} \right. \right\} \\
\text{(ii)} \quad & z^m(\xi) = \arg \max_{z^m \in \mathbb{R}^2} \left\{ u(c^m) + \delta \sum_{s' \in S} \rho_{s'} u(C_{s'}^r) \left| \begin{array}{l} c^m = w_s^m + \gamma - q(\xi)z^m \\ C^r = V(\xi)z^m \end{array} \right. \right\} \\
\text{(iii)} \quad & \Delta_k^y z_b^y(\xi) + \Delta_k^m z_b^m(\xi) = 0, \quad \Delta_k^y z_e^y(\xi) + \Delta_k^m z_e^m(\xi) = 1 \\
\text{(iv)} \quad & Q_{s'}^e(\xi) = q^e(\Gamma_{s'}(\xi), k^+, s'), \quad \forall s' \in S, \quad F_{s'}(\xi) = f(\Gamma_{s'}(\xi), k^+, s'), \quad \forall s' \in S
\end{aligned}$$

(i) and (ii) are the conditions requiring maximizing behavior on the part of young and middle-aged agents who anticipate the equity prices $Q^e(\xi)$ and, in the case of the young agents, anticipate the savings $F(\xi)$. Note that the vector of consumption $C^m \in \mathbb{R}_+^4$ which a young agent anticipates for middle age (hence the capital letter) must be distinguished from $c^m(\xi) \in \mathbb{R}$ which is the current consumption of a middle-aged agent. (iii) requires that the aggregate demands of the two cohorts for the bond and equity clear the markets. (iv) is the condition requiring the agents' expectations be correct. In choosing their portfolio $z^y(\xi)$ in state ξ , young agents anticipate transferring the income $\Gamma(\xi) = V(\xi)z^y(\xi)$ to the next period—where $V(\xi)$ is the anticipated payoff of the securities depending on $Q^e(\xi)$. In order that $Q_{s'}^e(\xi)$ be a correct expectation, it must coincide with the price $q^e(\Gamma_{s'}(\xi), k^+, s')$ which is realized in output state s' when middle-aged agents receive the portfolio income $\gamma' = \Gamma_{s'}(\xi)$ and the pyramid state is k^+ ; in the same way the saving $F_{s'}(\xi)$ that the young anticipate doing in their middle age must coincide with the actual savings of a middle-aged agent with asset income $\gamma' = \Gamma_{s'}(\xi)$.

For given anticipation functions

$$(Q^e, F) : \Xi \rightarrow \mathbb{R}_+^4 \times \mathbb{R}_+^4$$

(i), (ii), and (iii) in the Definition of a stationary equilibrium in Section 4, define a family of two-period equilibria indexed by $\xi = (\gamma, k, s) \in \Xi$. Assuming uniqueness of the equilibria, let

$$(z_{(Q^e, F)}(\xi), q_{(Q^e, F)}(\xi), \Gamma_{(Q^e, F)}(\xi), f_{(Q^e, F)}(\xi))$$

denote the equilibrium portfolios, prices, anticipated income transfers by the young, and the actual savings of the middle aged, for each $\xi \in \Xi$. Finding a recursive equilibrium amounts to finding

functions (Q^e, F) such that (iv) is satisfied i.e.

$$(E) \quad \begin{bmatrix} Q_{s'}^e(\xi) \\ F_{s'}(\xi) \end{bmatrix} = \begin{bmatrix} q_{(Q^e, F)}^e(\Gamma_{(Q^e, F)s'}(\xi), k^+, s') \\ f_{(Q^e, F)}(\Gamma_{(Q^e, F)s'}(\xi), k^+, s') \end{bmatrix} \quad \forall s' \in S, \forall \xi = (\gamma, k, s) \in \Xi$$

Assuming that the anticipation functions as well as the equilibrium functions are continuous, an equilibrium is a fixed point on the space of continuous functions $\mathcal{C}(\Xi, \mathbb{R}_+^8)$ of the form $(Q^e, F) = \psi(Q^e, F)$ where $\psi(Q^e, F)$ is defined by the RHS of (E). We look for an approximate equilibrium in the space of piecewise linear functions on $G \times K \times S$, calculating “as if” ψ was a contraction.

We begin by choosing an interval $G = [\underline{\gamma}, \bar{\gamma}]$ and a grid $G_m = \{g_1 \dots, g_m\}$ on this interval, and then choose arbitrary initial anticipation functions $(Q^{e,0}, F^0)$ on $G_m \times K \times S$. By solving a sequence of two-period equilibrium problems we can then compute the family of associated two-period equilibria $(z^0(\xi), q^0(\xi), \Gamma^0(\xi), f^0(\xi), \xi \in G_m \times K \times S)$, possibly modifying the interval G so that $\Gamma_s^0(\xi) \in G$ for all s and all $\xi \in G_m \times K \times S$. Then by recursion we define for $n \geq 1$ the anticipation functions $(Q^{e,n}, F^n)$ by

$$\begin{bmatrix} Q_{s'}^{e,n}(\xi) \\ F_{s'}^n(\xi) \end{bmatrix} = \text{Lin} \begin{bmatrix} q^{e,n-1}(\Gamma_{s'}^{n-1}(\xi), k_+, s') \\ f^{n-1}(\Gamma_{s'}^{n-1}(\xi), k_+, s') \end{bmatrix} \quad \forall s' \in S, \forall \xi \in G_m \times K \times S$$

where $(z^{n-1}, q^{n-1}, \Gamma^{n-1}, f^{n-1})$ is the family of two-period equilibria associated with $(Q^{e,n-1}, F^{n-1})$, and Lin denotes the linear interpolation

$$\text{Lin } q^{e,n-1}(\Gamma_{s'}^{n-1}(\xi), k_+, s') = \lambda q^{e,n-1}(g_j, k^+, s') + (1 - \lambda) q^{e,n-1}(g_{j+1}, k^+, s')$$

if $\Gamma_{s'}^{n-1}(\xi) = \lambda g_j + (1 - \lambda) g_{j+1}$. At each step we modify G if necessary so that $\Gamma_s^n(\xi) \in G$ for all s and all $\xi \in G_m \times K \times S$. Although it seems difficult to prove formally that the properties of uniqueness and continuity of the two-period equilibria are satisfied, and that ψ is a contraction, in practice the algorithm converges in less than 1000 iterations.

Appendix C: Table 10. Low Cohort Ratio

$N = 79, n = 69, w^y = (2.3, 2.3, 1.7, 1.7), w^m = (3.6, 3.6, 2.4, 2.4), D = (83, 57, 83, 57)$

		pyramid 1: MY ratio=0.87				pyramid 2: MY ratio=1.14			
		q^e	$PD/2$	r^{an}	rp^{an}	q^e	$PD/2$	r^{an}	rp^{an}
$\alpha = 2$	s_1	97 (.9)	11.4 (.1)	1.96 % (.01)	0.27 % (1.3)	117 (1.9)	14 (.23)	.6 % (.01)	0.28 % (1.2)
	s_2	95 (.8)	16.7 (.3)	2.07% (.01)	0.25 % (1.3)	113 (1.6)	20 (.6)	.8 % (.01)	0.26 % (1.2)
	s_3	51 (.5)	6.5 (.13)	5.3 % (.01)	0.23 % (1.3)	61 (1)	7.3 (.3)	3.96 % (.01)	0.27 % (1.2)
	s_4	50 (.4)	8.7 (.08)	5.5 % (.01)	0.26 % (1.3)	58 (.9)	10.1 (.15)	4.2 % (.01)	0.26 % (1.2)
	<i>Average</i>	73 (23)	10.5 (2.3)	3.7 % (1.8)	0.26 % (1.3)	86 (28)	12.3 (3.3)	2.5 % (1.8)	0.27 % (1.2)
		<i>ratio of av. prices: 1.2, peak / trough: 2.3, trough / peak : 0.4</i>							
$\alpha = 4$	s_1	145 (2.5)	17.5 (.3)	-16 % (.01)	1.04 % (2.3)	207 (10)	25 (1.3)	-2.5 % (.07)	.99 % (2)
	s_2	134 (2)	23.4 (.7)	.34 % (.01)	1.06 % (2.4)	183 (8.4)	32.2 (1.5)	-1.9 % (.06)	0.87 % (1.95)
	s_3	46 (.7)	5.5 (.09)	5.8 % (.01)	.96 % (2.5)	60 (3)	7.2 (.7)	3.6 % (.07)	1.09 % (2)
	s_4	40 (.5)	7.1 (.2)	6.8 % (.01)	1.13% (2.6)	49 (2)	8.6 (.4)	4.8 % (.06)	0.99 % (2)
	<i>Average</i>	92 (51)	12.7 (6.2)	3.3 % (3.3)	1.07 % (2.45)	127 (77)	17.4 (9)	1 % (3.5)	0.98 % (2)
		<i>ratio of av. prices: 1.4, peak / trough: 5.1, trough / peak : 0.19</i>							
$\alpha = 6$	s_1	236 (8.3)	28.4 (1)	-2.6 % (.04)	2.16% (3.5)	301 (40)	47 (5)	-5.7 % (.2)	1.87 % (2.7)
	s_2	202 (6.3)	35.5 (1.1)	-1.8 % (.03)	1.9 % (3.6)	319 (30)	56 (11)	-4.8 % (.2)	1.93 % (2.8)
	s_3	48 (1.3)	5.8 (.15)	5.6 % (.03)	2.14% (3.9)	64 (5.7)	7.7 (.7)	2.97 % (.2)	2 % (2.87)
	s_4	37 (.8)	6.5 (.1)	7.4 % (.03)	2.3 % (4.2)	43 (3.3)	7.5 (.8)	5.2 % (.2)	2.7 % (3)
	<i>Average</i>	134 (96)	18 (12)	2.3 % (4.8)	2.2 % (3.8)	211 (169)	28 (21)	-4 % (5.2)	2 % (2.9)
		<i>ratio of av. prices: 1.6, peak / trough: 10.6, trough / peak : 0.09</i>							